



Pokhara University
Faculty of Management Studies
School of Business

ANNUAL REPORT
2023/2024 (2080/2081)

Pokhara-30, Kaski, Nepal
Tel.: +977-61-504147 / 504035
E-mail: info@pusob.edu.np
Web: www.pusob.edu.np, www.pu.edu.np

ACKNOWLEDGEMENTS

It is our immense pleasure to present the Annual Report for the fiscal year 2080/2081 of School of Business (SOB), Faculty of Management Studies, Pokhara University. We extend our gratitude to all the members of various committees and cells, and sections of SOB for your tireless efforts and collaborative approach in ensuring the smooth functioning of all activities and initiatives throughout the academic year.

Our sincere thanks go to the faculty members who have consistently shown excellence in teaching, guidance, and mentorship. Your unwavering support and passion for nurturing the potential of every student are truly commendable. We would like to extend our appreciation to the non-teaching staff who work diligently behind the scenes to support the academic and administrative functions of the college. Your efforts ensure that the SOB remains an environment conducive to learning and growth.

We are also deeply thankful to our student clubs and class representatives for their proactive involvement and leadership in bringing ideas to life and representing the interests of the student body. Your enthusiasm and drive have significantly enhanced the learning environment, and we appreciate your continued commitment to making a difference.

We acknowledge and express our sincere thanks to the various stakeholders, including our students' internship providers, University Grants Commission, guest faculties – entrepreneurs, professionals and scholars, and industrial community whose collaboration has provided invaluable real-world experiences and bridge the gap between academic learning and practical application for our students.

The report is an outcome of collective efforts of all faculty members, staffs and students of School of Business, Pokhara University. It contains true and genuine information on the various parameters as per the guidelines laid down by UGC, Nepal.

Thank you

School of Business
Pokhara University

Message from THE DEAN



Dear Readers,

Welcome to the Pokhara University School of Business!

It is a distinct privilege to address you through the Annual Report 2023/2024 of the School of Business. This platform allows us to share the progress, milestones, and aspirations of our dynamic academic community with our valued stakeholders—both internal and external.

Over the past year, the School of Business has continued to achieve excellence through various academic and extracurricular endeavors. We have rigorously adhered to our academic calendar, conducted impactful research, and undertaken curriculum redesign initiatives to meet the evolving demands and necessities of the modern labor market. Notably, the Faculty of Management Studies (FMS) has integrated cutting-edge IT-related courses into the curriculum to align with contemporary industry needs. Additionally, we have signed multiple Memoranda of Understanding (MoUs) with esteemed universities and business organizations in order to expand our academic and professional networks. Our majority of faculties have been awarded PhD degree by renowned universities and competent enough to carry out advance research in their respective field.

The School of Business has achieved Quality Assurance and Accreditation (QAA) status from the UGC, a testament to our commitment to academic excellence. Another noteworthy accomplishment is the establishment of an Incubation Center, which fosters innovation and entrepreneurship among our students. These achievements position the School of Business as a preferred destination for students from across the country.

As the Dean of the Faculty of Management Studies, my vision is to foster an environment where students and faculty can generate knowledge and pursue rewarding careers in academia and beyond. Our unwavering commitment is to develop dedicated managers and visionary entrepreneurs equipped to address organizational and societal challenges with confidence and creativity. I remain mindful of my responsibility to elevate the standards of all business schools affiliated with Pokhara University, ensuring they thrive as centers of academic excellence across the country.

To all prospective students, I warmly invite you to join this vibrant academic community and embark on a journey of discovery, growth, and transformation. Come as seekers of knowledge, and leave as leaders ready to make meaningful contributions to the society. I assure you that your time at the Pokhara University School of Business will be remarkable, enriching, and transformative.

Wishing you success in your academic endeavors at Pokhara University.

Dr Daya Raj Dhakal
Dean, Faculty of Management Studies
Pokhara University

Message from **THE DIRECTOR**



Our efforts are always focused on creating the appropriate environment where students can excel and transfer their applied knowledge and skills into economic advancement and community wellbeing. I am honoured for being a member of the School of Business and upholding its values. In the year 2023/24, we have made significant achievements in learning and teaching, research, and extracurricular activities.

In the support of the University Grants Commission, Nepal, the school succeeded in providing the first installment of seed fund grants loan to three business ideas named Ashosthama (banana fiber processing), the Tyre Processing Industry and Thrifty Heaven for NRs 57 lakhs out of the total approved amount of NRs. 95 lakhs.

To manage the fast moving trimesters and semesters of graduate and undergraduate, faculties and staff have indeed done well by executing all the academic activities, research, publication, administrative support, and necessary inputs for the students to perform their extracurricular activities. Different committees and cells have been meeting their targets timely. Student clubs have organized innovative programs like book fairs, sports, awareness raising campaigns, training, seminars and such other innovative events in different areas.

The school is closer to meeting its financial target by recovering all operational expenses through self-generated income. I want to acknowledge and thank faculty members, different cell and committee members, staff, and all the students, including various quality circle club members and class representatives, for their passion, dedication, and perseverance to meet the set objectives of the school. I would like to express my gratitude to the Pokhara University authorities, University Grants Commission Nepal, Pokhara Metropolitan City, Lekhnath Chamber of Commerce and Industry, parents, and guardians for their constant support and encouragement.

Shrijan Gyanwali, PhD
Director
School of Business, Pokhara University

TABLE OF CONTENTS

| Title | Page |
|---|-------------|
| ACKNOWLEDGEMENTS | I |
| MESSAGE FROM THE DEAN | II |
| MESSAGE FROM THE DIRECTOR | III |
| EXECUTIVES SUMMARY | VII |
| INSTITUTIONAL OVERVIEW | 1 |
| 1. BACKGROUND | 1 |
| 2. GOVERNANCE AND LEADERSHIP | 2 |
| 3. ACADEMIC PROGRESS | 4 |
| 3.1 Programs | 4 |
| 3.2 Students Enrolment Trend | 4 |
| 3.3 Pass Rate Analysis | 10 |
| 3.4 QAA Certification | 12 |
| 3.5 Educational Pedagogy | 13 |
| 3.6 Evaluation and Examination | 15 |
| 4. PHYSICAL PROGRESS | 15 |
| 4.1 Infrastructure Development | 15 |
| 4.2 Educational Aid | 16 |
| 4.3 Books, Journal and Reference Materials | 17 |
| 5. FINANCIAL PROGRESS | 18 |
| 6. SOCIAL PROGRESS | 18 |
| 6.1 School Management Committee and IQAC | 18 |
| 6.2 Participation in Curriculum Development Process | 19 |
| 6.3 Other Committee and Cell Activities | 19 |
| 6.4 National and International Relationship | 23 |
| 6.5 Faculty Development Initiatives | 23 |
| 7. STUDENTS LIFE AND ENGAGEMENT | 24 |
| 8. RESEARCH AND INNOVATION | 26 |
| 8.1 Faculty Research Publication and Dissemination | 26 |
| 8.2 Entrepreneurship Support Program | 29 |
| 9. REGULAR ACTIVITIES | 30 |
| 10. ISSUES AND STRATEGIC RESPONSE | 32 |
| 10.1 Issues and Challenges | 32 |
| 10.2 Plan for Addressing Issues and Challenges | 32 |
| ANNEX 1: BUDGET FOR FISCAL YEAR 2081/82 | 33 |
| ANNEX 2: LIST OF THE FACULTY MEMBERS | 36 |
| ANNEX 3: LIST OF THE ADMINISTRATIVE STAFF | 38 |
| ANNEX 4: GRADUATE LIST 2023 | 39 |

LIST OF TABLES

| Table No. | Table Name | Page |
|------------------|---|-------------|
| Table 1 | Admission Trend in MBA | 5 |
| Table 2 | Student Enrolment Trend of BBA Program in 2023/2024 (Fall Semester) | 6 |
| Table 3 | Student Enrolment Trend of BBA Program in 2023/2024 (Spring Semester) | 7 |
| Table 4 | BBA-BI Students Enrolment in 2023/2024 (Fall Semester) | 8 |
| Table 5 | BBA-BI Students Enrolment 2023/2024 (Spring Semester) | 9 |
| Table 6 | Pass Rate Trend of BBA Program for the Academic Year 2023/2024 | 10 |
| Table 7 | Pass Rate Trend of BBA-BI Program for the Academic Year 2023/2024 | 11 |
| Table 8 | Graduation Rate of SOB Students | 12 |
| Table 9 | Educational Aid | 16 |
| Table 10 | Area wise Book Details in 2080/2081 | 17 |
| Table 11 | Financial Analysis of Last Three Years | 18 |
| Table 12 | Faculty Research Grants | 21 |
| Table 13 | Students Council and Clubs | 26 |

LIST OF FIGURES

| Figure No. | Figure Name | Page |
|-------------------|--|-------------|
| Fig. 1 | Organizational Structure | 3 |
| Fig. 2 | Admission Trend of MBA Student (Fall and Spring Trimester) | 5 |
| Fig. 3 | Enrolment Trend of BBA Program (Fall Semester) | 6 |
| Fig. 4 | BBA Admission Trend (Spring Semester) | 7 |
| Fig. 5 | BBA-BI Enrolment Trend (Fall Semester) | 8 |
| Fig. 6 | BBA-BI Admission Trend (Spring Semester) | 9 |
| Fig. 7 | BBA Student Passing Rate (Semester-wise) | 10 |
| Fig. 8 | BBA-BI Student Passing Rate (Semester-wise) | 11 |
| Fig. 9 | Graduation Trend 2023 | 12 |

EXECUTIVE SUMMARY

The School of Business started its BBA program in 1999, MBA program in 2000 and BBA-BI program in 2009. The BBA and BBA-BI is four-year semester program and the MBA is two-year trimester program. The primary aim of these programs is to prepare middle level managers to meet the needs of trade, industry, service enterprises, government institutions and nongovernment organizations in different functional areas of management.

The main objective of the School of Business is to create educated and skilled manpower throughout the country by making business education available to a large number of populations. Currently, the School of Business (SOB) is offering programs at undergraduate (BBA and BBA-BI) and graduate levels (MBA).

Student Enrolment

The student enrolment trend in the BBA program for the last five years i.e 2019 to 2023 indicates that the year 2022 recorded the highest numbers of students' enrolment in fall (435) and spring (411). With regards to the lowest number of students' enrolment, it was found in 2019 spring (328). The student enrolment trend in the BBA-BI program for the last five years i.e 2019 to 2023 indicates that the year 2022 recorded the highest numbers of students' enrolment fall (206). The lowest number of enrollment in the BBA-BI was recorded in the 2020 fall (146). Students' enrolment pattern in the MBA program indicates that the highest in the year August 2022 with full occupancy, 30 students in both Full Time and Job Holders. The lowest rate of admission in the MBA appears in March 2023 with 36 students (60% occupancy).

Pass Rate Trend

The pass percentage rate of BBA students for the academic year 2023/2024 in the fourth semester is 94.11 (85 out of 80). Similarly, the examination pass percentage for BBA-BI program, in the seven semester, is 96.87% (31 out of 32).

Graduate Trend

Total 259 SOB students of MBA, BBA and BBA BI participated in 19th convocation ceremony of Pokhara University. As per the graduate list there were 135 (70 Female and 65 Male) students from MBA program, 92 (55 Female and 37 Male) students from BBA program and 32 (22 Female and 10 Male) students from BBA-BI program.

Financial Performance

Total income for this year is Nrs. 62,775,171 including fee, grants and interest income. The total expenditure is 63,534,875 comprising employee cost, operating cost and capital expenditure.

Major Activities of School Management Committee and IQAC

- Annual report 2022/2023 was published.
- An academic audit report was prepared and submitted to UGC.
- SOB strategic plan 2024/2029 was prepared.
- Tracer study report 2021 and 2022 was prepared.
- Faculty and staff development program was organized on Falgun 18 and 19, 2080 at Dhampus Kaski.

- Eight research proposal were selected for faculty research grants.
- A memorandum of understanding was signed with Pokhara Metropolitan for paid internship opportunity to SOB students.
- Three PU students got the first installment of start-up seed fund grants from UGC, Nepal.
- Ashmita Paudel, students' representative, was appointed as a member of IQAC after passing out MBA by Subigya Thapa.
- Orientation and socialization events were conducted for both Masters and Bachelors programs.

Research Journal

The editorial team of JOURNAL OF BUSINESS AND MANAGEMENT - JBM (ISSN:2350-8868) published the Volume VIII, Number 1. Total 12 research articles with DOI number were published.

Graduate Research Projects (GRP) and Project Work

In the year 2080/2081, one hundred twenty-two MBA students successfully completed and disseminated their Graduate Research Report. Similarly, BBA and BBA-BI students completed their Project Work within the scheduled time in the proper guidance and supervision of the faculties.

Activities of Students' Club in 2080/2081 (2023/2024)

Sharing Harmony in New Environment (SHINE), Pokhara University Council of Management Students (PUCMS), Study Group for Banking and Insurance (SGBI) and Involvement Development Evaluation Achievement and Success (IDEAS) organized book fair, students' welcome, training, seminar and competitive events. Class Representatives (CR) of different classes supported constantly to conduct the academic activities, internal examination and extracurricular activities.

Faculty Research Initiative in 2023/2024

During the fiscal year 2023/2024, eight faculty selected for research grants after the proposal defense. Most of the SOB faculty members have published the research articles in the indexed journal and some of the faculties have been conducting collaborative research funded by different institutions. Most of the SOB faculties participated in national and international conference and presented the research paper, session chair and such other academic activities.

INSTITUTIONAL OVERVIEW

1. BACKGROUND

The School of Business established in 1999 is an institution rich in resources with a strong band of faculty and competitive graduate and undergraduate students. A leading constituent business school of Pokhara University, the Faculty of Management Studies, in an effort to maintain quality education, consistently focuses on individual students' academic growth and professional competence. Its faculty and staff are committed to enhance students' communication skills by recognizing learners' challenges at the university and the workplace. The School of Business runs Master of Business Administration (MBA), Bachelor of Business Administration (BBA), and Bachelor of Business Administration in Banking and Insurance (BBA-BI) programs.

The School of Business started its BBA program in 1999, MBA program in 2000 and BBA-BI program in 2009. The BBA and BBA-BI programs are four-year semester system and MBA is 2 years trimester system program. Primary aim of these academic program is to prepare middle level managers to meet the needs of business industry, service-oriented industry, government agencies and nongovernment organizations in different functional areas of management. The teaching team of School of Business is highly competent, dedicated and renowned in the academic field. The college also arranges guest lectures and training sessions of practitioners and reputed personalities and it conducts many skill development activities in and outside the college for the practical exposure of the students.

Vision

To take a leading position in the higher education in management in a competitive business world.

Mission

Provide quality based programs in different areas of administration and management to meet needs and demands of an increasing global market and complex business world.

Focus on the "real" world of employment, underpinned by an international research capability based on academic excellence and practical business relevance.

Offer business and management courses that combines a thorough grounding in both management theory and practice with the opportunity to specialize in accounting, finance, human resource management, marketing and international business.

Goals

The school has set goals to:

- Produce market-driven and service-oriented managers and executives with various level of competence through teaching, learning and research.
- Link the PU system with the community and the business world by preparing business graduates with positive attitudes and constructive minds.
- Equip youths with managerial skills and professional expertise to face unprecedented levels of complex operational challenges both at home and abroad.

School of Business strives for maintaining quality education consistently focusing on academic growth as well as professional competence of individual students. Its faculties and staffs are committed to

enhance students' managerial and communication skills by recognizing learners' challenges at the university and the workplace. The twenty-first century has witnessed uninterrupted expansions in global economics, rapid changes in business systems and technologies, and increasing concerns in business ethics. The university, therefore, believes that it is the responsibility of any service-oriented private or public organization to respond to these global concerns. Primarily, the vision of the school is to create competent professionals having sound academic foundation and to achieve this; the mission of the school is well articulated. Based on the Vision and Mission of the school and inputs from various stakeholders, the Strategic Plan of SOB has been be drafted. The school's vision, mission and goals of the school are achieved through strategic action plan, schedule for future development, effective leadership and participative decision- making process.

In addition, the strategic directions for the future instilled and communicated through extended future directions are evidently significant in the growth of the organization. The SOB therefore essence fully complies to the following extended vision to address these issues and, thus, strives to serve the best interest of people and the global community. With an aim of taking a leading position in the higher education in management in a competitive business world, School of Business firmly believes that effective dissemination of knowledge and skills to student is possible only when efforts of subject experts, learned teachers and researches are backed by much needed modern equipment and facilities. The twenty-first century has witnessed uninterrupted expansions in global economics, rapid changes in business systems and technologies, and increasing concerns in business ethics. Pokhara University, therefore, believes that it is the responsibility of any service-oriented private or public organization to respond to these global concerns. The School of Business has the vision to address these issues and, thus, serve the best interest of people and the global community. The vision, mission and goals of the institution are achieved through strategic action plan, schedule for future development, effective leadership and participative decision-making process. Based on the philosophy of SOB to provide the holistic and modern management education in all aspects of teaching, learning, evaluation, research and extension services it desires to place itself as a premier business institution. By breaking the barrier between urban and rural students, the school strives to spread education to everyone. A special focus is given to those belonging to the marginalized sections of society irrespective of caste, creed, religion and gender.

2. GOVERNANCE AND LEADERSHIP

The Director is the Head of the school. He/she delegates responsibilities to the Coordinators, faculty members and staffs. He/she guides, assists and co-ordinates the implementation of various decisions. Accountability and transparency in the execution of duties is central to the administration at SOB. Faculty is intimately and organically involved in the decision-making process. All academic and policy decisions are taken in consultation with the faculty members. All administrative bodies have faculty representation. Thus, academic and administrative planning in the institution is well coordinated. At the beginning of the academic year, various departments and the members of administration scrutinize the work load and assess the need for staff recruitment and other infrastructural requirements. This is further scrutinized by the Dean. New recruitments are done through a selection process that meets satisfying the government criteria for both substantive posts and school created posts. The institution has a self-appraisal method to evaluate the performance of the faculty in teaching, research and extension programs. Skill up-gradation and training programs are conducted for the non-teaching staff members when required. The school constantly organizes Orientation and Faculty Development Programs. The faculty is encouraged for research and project work leading to their academic development. Thus, the management of human resource is meticulously planned and executed. Effective efforts are also undertaken for resource mobilization. The main sources of grants are the Nepal Government and

the University Grants Commission (UGC). Apart from this, alumni contributes towards institutional development. The students' fees contribute to resource mobilization. At the beginning of each financial year, the concerned authorities prepare the activity-wise budget. The budget is sent for approval to the University Executive Council. Periodic review of the budget expenses is made for optimal utilization. Pokhara University has provisioned an internal auditing system. Further, external audit is done in every financial year. Thus, the available resource is optimally allocated and utilized through efficient financial resource management. The leadership of the Director, the active participation of the Staff, both teaching and non-teaching, in academics and administration together with effective internal coordination and monitoring by the University and UGC, make it possible for the school to achieve its goals.

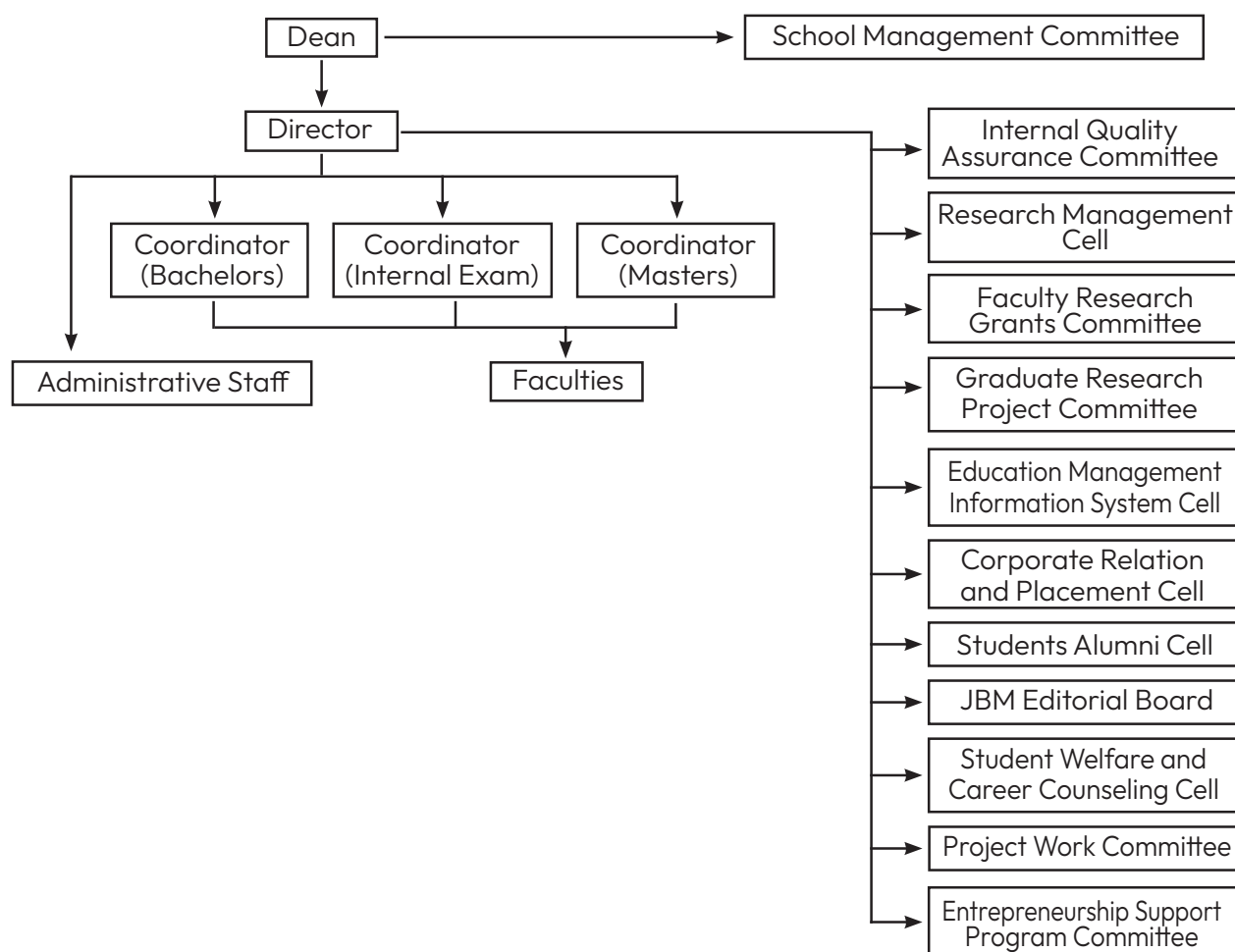


Fig. 1 Organizational Structure

Figure 1 shows that the director is responsible for overall management of the school and he/she remains under the Dean, Faculty of Management Studies in the structural hierarchy. A team of director, coordinators, various committees and cells, faculty members and staffs carry out the operational activities as guided by School Management Committee for smooth functioning of the institution.

3. ACADEMIC PROGRESS

3.1 Programs

MBA (Master of Business Administration) is a general management degree taught from a global perspective that prepares students for a range of management careers. It is a full-time, two-year program and stretched over six trimesters for the students. The MBA students are required to complete 66 credits including 27 courses, 3 practicum and seminars, 1 graduate research project and 8 weeks internship. The BBA program of School of Business, Pokhara University is designed to promote and prepare students for positions of leadership and responsibility in the areas of business and management. The degree is highly valued by reputed corporate houses and business enterprises. BBA opens many opportunities for its graduates both as managers and also as entrepreneurs. The BBA program has established itself as one of the widely accepted degrees in the country and abroad. Since its inception in 1999, the School of Business BBA program has been receiving overwhelming response from the concerned communities. The program covers a period of four academic years spread over eight semesters and 120 credit hours. The program also requires students to complete a project work and an internship. The first four semesters are devoted to build the fundamental concept of management. The last four semesters offer elective and specialization courses which enable the students to develop specialized and focused skills and knowledge in the area of their choice.

The BBA-BI program is one of the most sought-after degrees in today's highly uncertain world where financial management and insurance mean a lot to most of us. BBA- BI can address students' needs to adequately understand these specific areas and acquire a competitive edge in shaping their career. BBA - BI attracts scholars from a wide range of academic disciplines who have dreams for a giant leap in their career. Recognized universally, BBA-BI is a challenging educational program that instills the basic management principles in students along with making them conversant in recent trends and practices in banking and insurance. After the completion of the course, students will be able to work as middle level manager in different bank, insurance and financial institutions.

3.2 Student Enrolment Trend

The main objectives of the programs of school of Business are to create educated and skilled manpower throughout the country by making business education available to a large number of populations. Currently, School of Business (SOB) is offering BBA and BBA-BI programs in undergraduate and MBA in graduate levels.

3.2.1 Student Enrolment Trend in Masters Level (MBA Program)

In the MBA, two intakes are taken annually. In the March intake 60 Full Time students are enrolled. In the August, 30 Full Time students and 30 Job Holder students are enrolled. The enrolment trend from 2020 August to 2023 March is presented in Table 1.

Table1: Admission Trend in MBA

| Detail of Enrolment | Session | Total |
|--------------------------|------------|------------|
| I (2024 March intake) | Full time | 41 |
| I (2023 August intake) | Full time | 30 |
| III (2023 March Intake) | Full time | 36 |
| III (2022 August Intake) | Full time | 30 |
| VI (2022 March Intake) | Full time | 46 |
| VI (2021 August Intake) | Full time | 22 |
| III (2022 August Intake) | Job Holder | 30 |
| VI (2021 August Intake) | Job Holder | 30 |
| Total | | 265 |

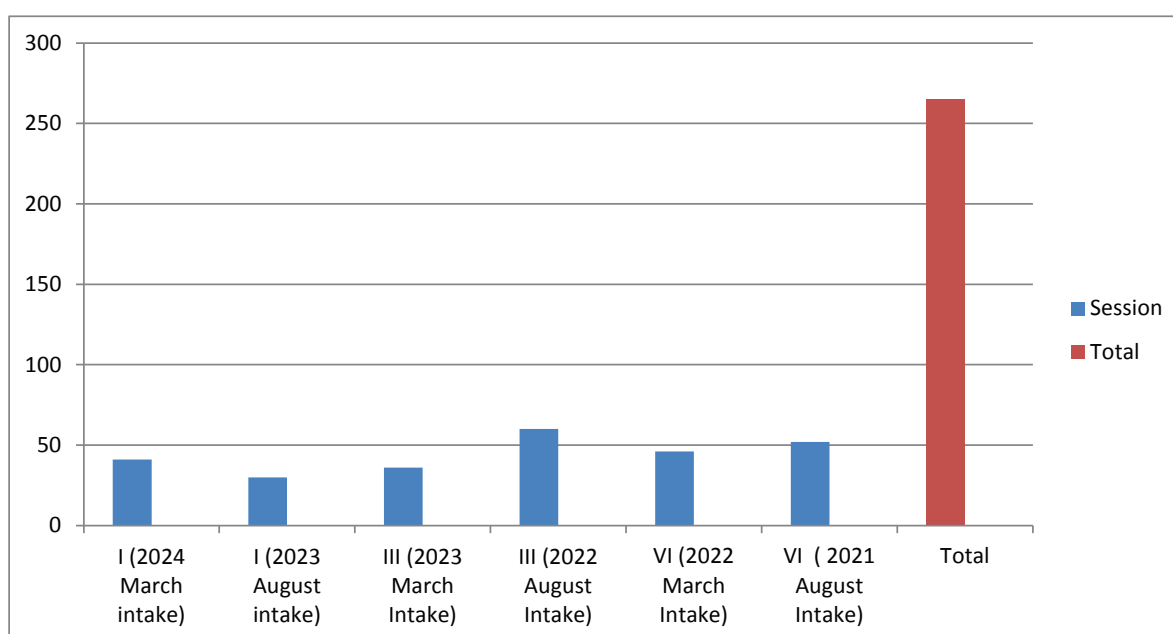
**Fig. 2 Admission Trend of MBA Student (Fall and Spring Trimester)**

Table 1 shows 30 (100 percent) students got admission in Job Holder and Full Time in 2022 August. Similarly, 30 job holder students (100 percent) got admission in 2021 August. Least number of students enrolment is in 2023 March with 36 students in full time. The admission trend in MBA program is also depicted in Figure 2.

3.2.2 Student Enrolment Trend in Bachelors Level

School of Business opens admission in BBA and BBA-BI program in bachelors level. The admission trend in two different program is explained in following section.

3.2.2.1 Students enrolment in BBA Program

Annual 96 students are enrolled in the BBA program. The admission is opened for August intake. The program is operated in Semester system. Therefore, admission trend can be analyzed in two different semesters, Spring and Fall Semester. Students' admission rate in BBA program is shown in Table 2 and Table 3.

Table 2: Student Enrolment Trend of BBA Program in 2023/2024 (Fall)

| Semester (Spring) | Year | | | | |
|-------------------|------------|------------|------------|------------|------------|
| | 2019 | 2020 | 2021 | 2022 | 2023 |
| I Semester | 97 | 97 | 96 | 96 | 96 |
| II Semester | - | - | 85 | - | - |
| III Semester | 90 | 90 | 77 | 92 | 89 |
| IV Semester | - | - | - | 87 | 85 |
| V Semester | 82 | 82 | 89 | 72 | 70 |
| VII Semester | 71 | 77 | 80 | 88 | 71 |
| Total | 340 | 346 | 427 | 435 | 411 |

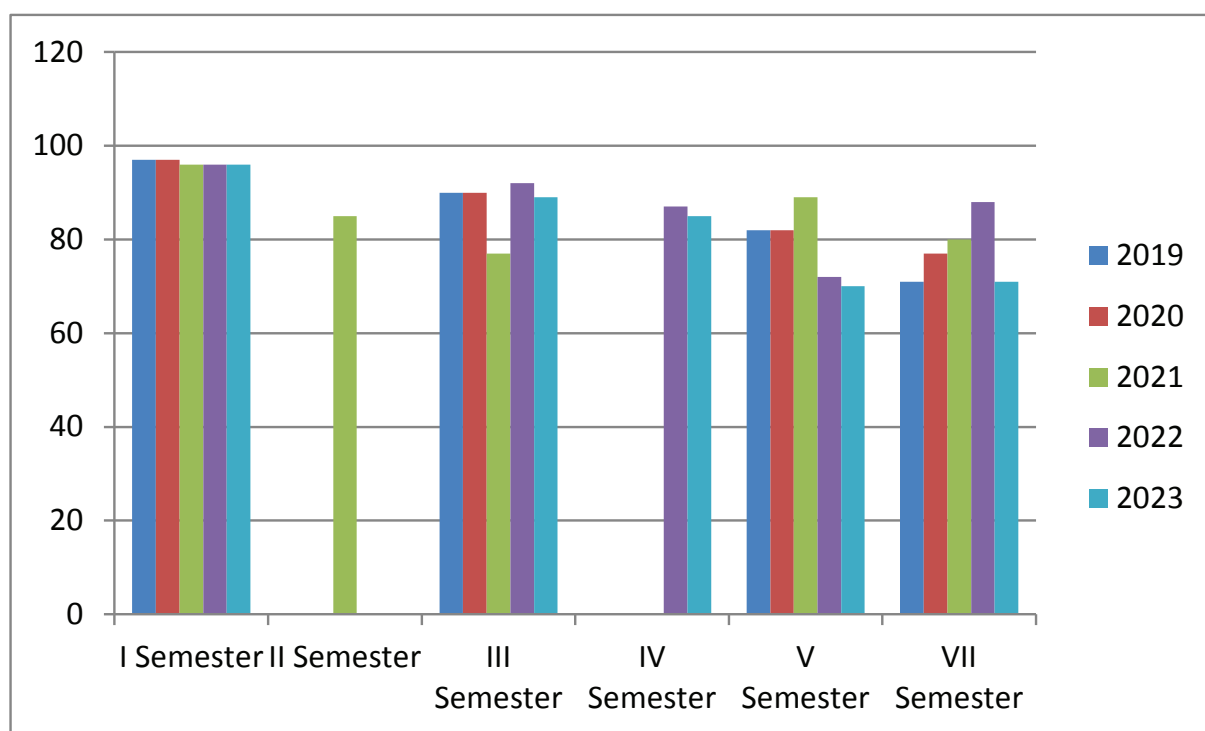


Fig. 3 Enrolment Trend of BBA Program (Fall Semester)

Table 2 and Figure 3 show the student enrolment trend in BBA program (Fall Semester) for the last five years i.e. 2019 to 2023 in the Fall Semester. From the table, it is observed that the year 2022 recorded the highest numbers of students' enrolment (435). Year 2021 is in second position with the admission of 427 students. The year 2019 records the lowest enrolment (340).

Table 3: Student Enrolment Trend of BBA Program in 2023/2024 (Spring Semester)

| Semester (Fall) | Year | | | | |
|-----------------|------------|------------|------------|------------|------------|
| | 2019 | 2020 | 2021 | 2022 | 2023 |
| II Semester | 90 | 85 | 93 | 90 | 92 |
| III Semester | - | - | - | 88 | - |
| IV Semester | 85 | 88 | 80 | 74 | 82 |
| V Semester | - | - | - | - | 85 |
| VI Semester | 82 | 82 | 88 | 71 | 69 |
| VIII Semester | 71 | 77 | 80 | 88 | 70 |
| Total | 328 | 332 | 341 | 411 | 398 |

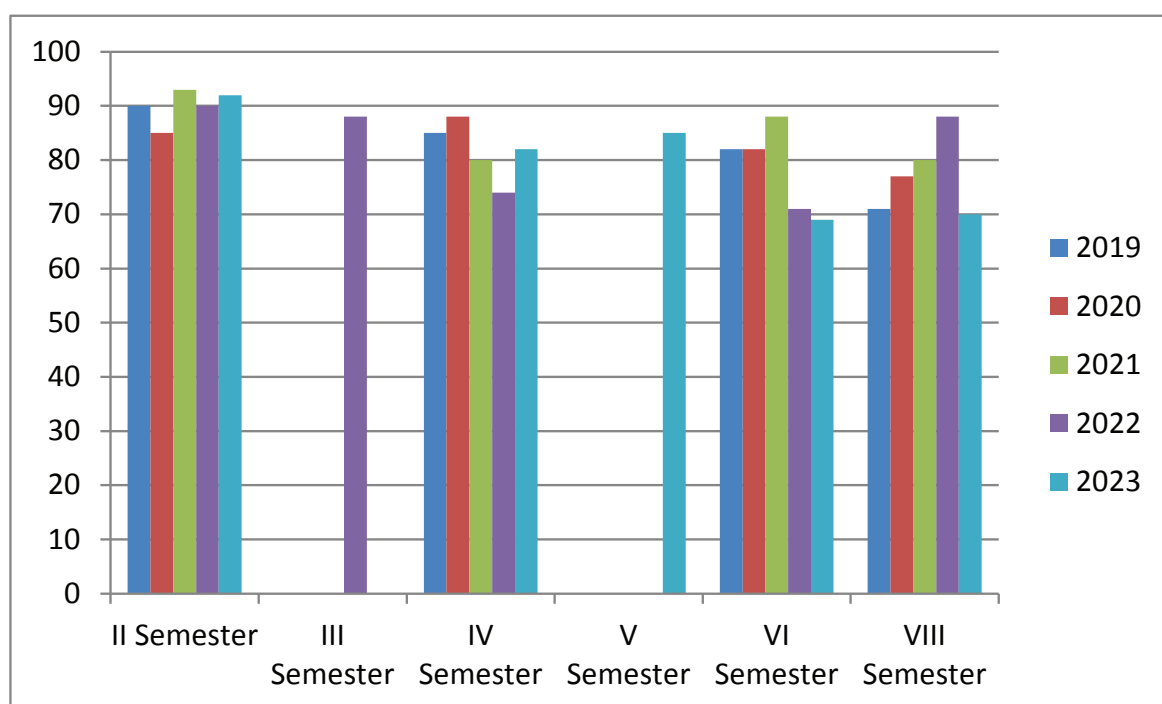
**Fig. 4 BBA Admission Trend (Spring Semester)**

Table 3 and Figure 4 show the student enrolment trend in BBA program (Spring Semester) for the last five years i.e 2019 to 2023 in the Spring Semester. From the table, it is observed that the year 2022 recorded the highest numbers of students' enrolment (411) and it is followed with 398 students in the year 2018. The year 2023 records the lowest enrolment (328).

3.2.2.2 Students enrolment in BBA-BI Program

Annual 48 students are enrolled in the BBA-BI program. The admission is opened for August intake. The program is operated in Semester system. Therefore, admission trend can be analyzed in two different semesters, Spring and Fall Semester. Students' admission rate BBA-BI program (fall semester) is shown in Table 4 and Table 5.

Table 4: BBA-BI Students Enrolment in 2023/2024 (Fall Semester)

| Semester (Fall) | Year | | | | |
|-----------------|------------|------------|------------|------------|------------|
| | 2019 | 2020 | 2021 | 2022 | 2023 |
| I Semester | 42 | 47 | 48 | 47 | 27 |
| III Semester | 37 | 35 | 47 | 43 | 41 |
| IV Semster | - | - | - | 40 | 40 |
| V Semester | 43 | 28 | 32 | 44 | 40 |
| VII Semester | 33 | 36 | 27 | 32 | 41 |
| Total | 155 | 146 | 154 | 206 | 189 |

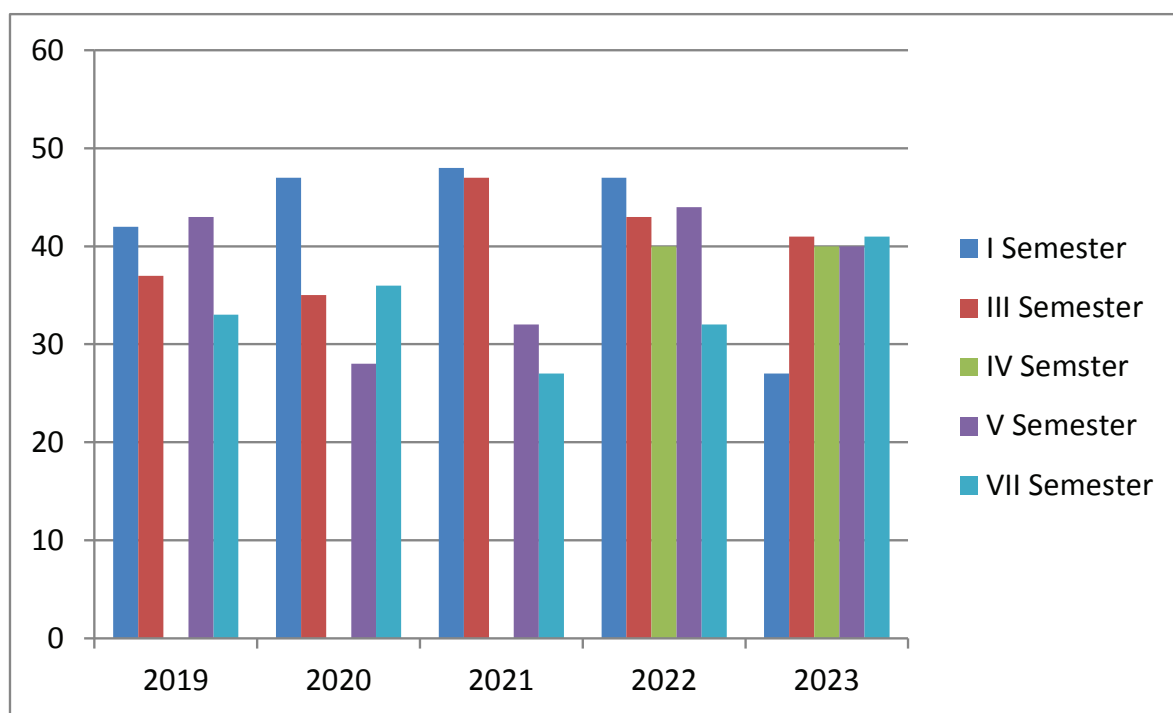


Fig. 5 BBA-BI Enrolment Trend (Fall Semester)

Table 4 and Figure 5 show the student enrolment trend in BBA-BI program (Fall Semester) for the last five years, 2019 to 2023 in the Fall Semester. From the table, it is observed that the year 2022 recorded the highest numbers of students' enrolment (206). Year 2023 remains in next position with the admission of 189 students. The year 2020 records the lowest enrolment (146).

Table 5: BBA-BI Students Enrolment 2023/2024 (Spring Semester)

| Semester (Spring) | Year | | | | |
|-------------------|------------|------------|------------|------------|------------|
| | 2019 | 2020 | 2021 | 2022 | 2023 |
| II Semester | 47 | 47 | 48 | 45 | 27 |
| III Semester | - | - | - | 41 | - |
| IV Semester | 37 | 37 | 43 | 40 | 40 |
| V Semester | - | - | - | - | 37 |
| VI Semester | 45 | 28 | 32 | 43 | 39 |
| VIII Semester | 33 | 36 | 27 | 32 | 41 |
| Total | 162 | 148 | 150 | 201 | 184 |

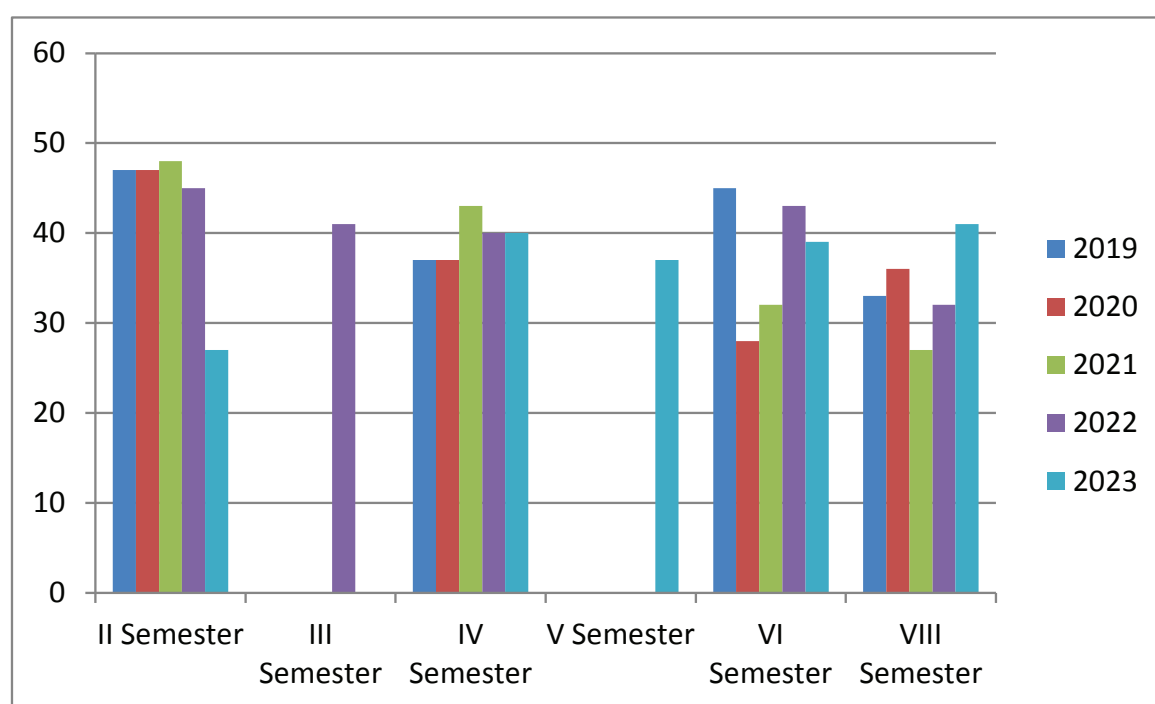


Fig. 6 BBA-BI Admission Trend (Spring Semester)

Table 5 and Figure 6 show the student enrolment trend in BBA-BI program (Spring Semester) for the last five years i.e 2019 to 2023 in the Spring Semester. From the table, it is observed that the year 2022 recorded the highest numbers of students' enrolment (201) and it follows with 184 students in the year 2023. The year 2020 records the lowest enrolment (148).

3.3 Pass Rate Analysis

3.3.1 Exam Passed Students in BBA Program

Pass out rate in BBA Program is analyzed on the basis of number of students appeared in examination and pass out. It also covers the semester wise number of male and female students. The analysis covers the four years data, presented in Table 6.

Table 6: Pass Rate Trend of BBA Program for the Academic Year 2023/2024

| Year | Semester | Male | | Female | | Total | | |
|-------------|----------|---------------|--------|---------------|--------|---------------|--------|--------|
| | | Exam Appeared | Passed | Exam Appeared | Passed | Exam Appeared | Passed | Pass % |
| First Year | First | 40 | 26 | 56 | 29 | 96 | 55 | 57.29 |
| | Second | 45 | 19 | 50 | 30 | 95 | 49 | 51.57 |
| Second Year | Third | 36 | 12 | 45 | 33 | 81 | 45 | 55.55 |
| | Forth | 40 | 38 | 45 | 42 | 85 | 80 | 94.11 |
| Third Year | Fifth | 36 | 27 | 34 | 30 | 70 | 57 | 81.42 |
| | Sixth | 42 | 31 | 30 | 29 | 72 | 60 | 83.33 |
| Fourth Year | Seventh | 40 | 34 | 30 | 30 | 70 | 64 | 91.42 |
| | Eighth | 34 | 31 | 53 | 49 | 87 | 80 | 91.95 |

Table 6 presents the pass percentage rate of students in BBA program for the academic year 2023/2024. The result reveals that the highest pass percentage is 94.11 (80 out of 85) in forth semester. Similarly, pass percentage of seventh and eighth semester is 91.95 (80 out of 87) and 91.42 (64 out of 70) respectively. The pass rate has increased gradually in the final years. It is also presented in Figure 7.

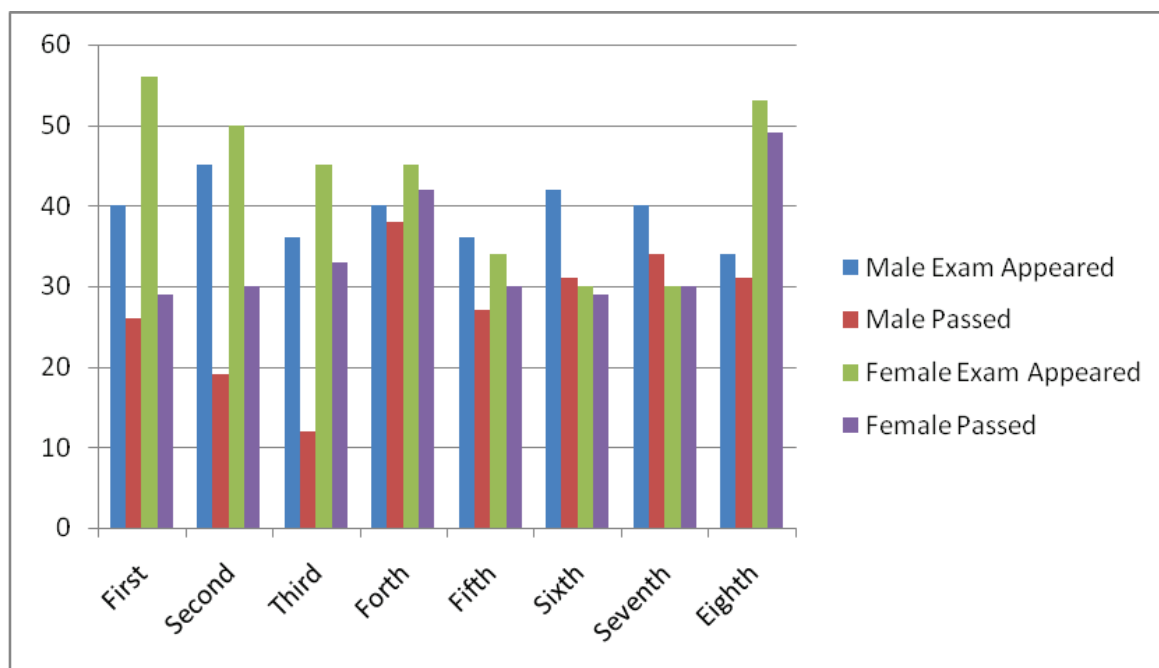


Fig. 7 BBA Student Passing Rate (Semester-wise)

3.3.2 Exam Passed Students in BBA-BI Program

Pass out rate in BBA-BI Program is analyzed on the basis of number of students appeared in examination and pass out. It also covers the Semester wise number of male and female students. The analysis covers the four years data, presented in Table 7 and Figure 8.

Table 7: Pass Rate of BBA-BI Program for the Academic Year 2023/2024

| Year | Semester | Male | | Female | | Total | | |
|-------------|----------|---------------|--------|---------------|--------|---------------|--------|--------|
| | | Exam Appeared | Passed | Exam Appeared | Passed | Exam Appeared | Passed | Pass % |
| First Year | First | 7 | 1 | 20 | 6 | 27 | 7 | 25.92 |
| | Second | 15 | 2 | 27 | 4 | 42 | 6 | 14.28 |
| Second Year | Third | 13 | 5 | 27 | 7 | 40 | 12 | 30.00 |
| | Forth | 8 | 1 | 29 | 22 | 37 | 23 | 62.16 |
| Third Year | Fifth | 16 | 10 | 23 | 21 | 39 | 31 | 79.48 |
| | Sixth | 12 | 5 | 31 | 23 | 43 | 28 | 65.11 |
| Fourth Year | Seventh | 13 | 10 | 28 | 27 | 41 | 37 | 90.24 |
| | Eighth | 7 | 7 | 25 | 24 | 32 | 31 | 96.87 |

Table 7 presents the pass percentage rate of students in BBA-BI program for the academic year 2023/2024. The result reveals that the pass percentage by the end of the seventh semester reached to 96.87% (31 out of 32 exam appearing students). It is followed by seventh semester with 90.24 (37 out of 41) percentage. The lowest pass rate seems in the first semester, 14.28% (6 out of 42 exam appearing students). It is also shown in Figure 8.

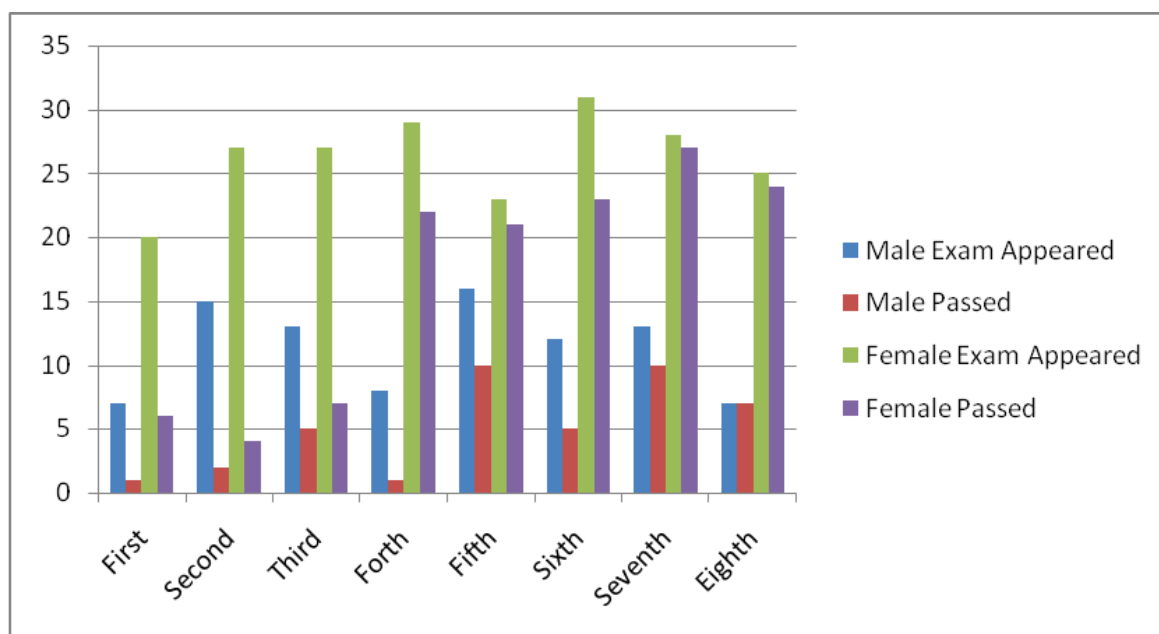


Fig. 8 BBA-BI Student Passing Rate (Semester-wise)

3.3.3 Graduation Rate of SOB Students

Two hundred fifty-nine SOB students passing in the year 2023 participated in the 19th Convocation program of the Pokhara University. The number of students graduated at the bachelor's and master's levels is presented in Table 8.

Table 8: Graduation Rate 2023

| Level | Male | Female | Total |
|--------|------|--------|-------|
| MBA | 65 | 70 | 135 |
| BBA | 37 | 55 | 92 |
| BBA-BI | 10 | 22 | 32 |
| Total | 112 | 147 | 259 |

Table 8 shows that 135 MBA students, 92 BBA students and 32 BBA-BI students participated in the 19th Convocation ceremony of Pokhara University. Out of 135 MBA students, 70 are female and 65 are male. In the BBA program, out of 92 graduated students, 55 female and 37 male students graduated in the year 2023. Similarly, in the BBA-BI program 22 female and 10 male students participated in the graduation ceremony this year. In the whole program, female students are in greater number than male. The graduation trend is also depicted in Figure 9.

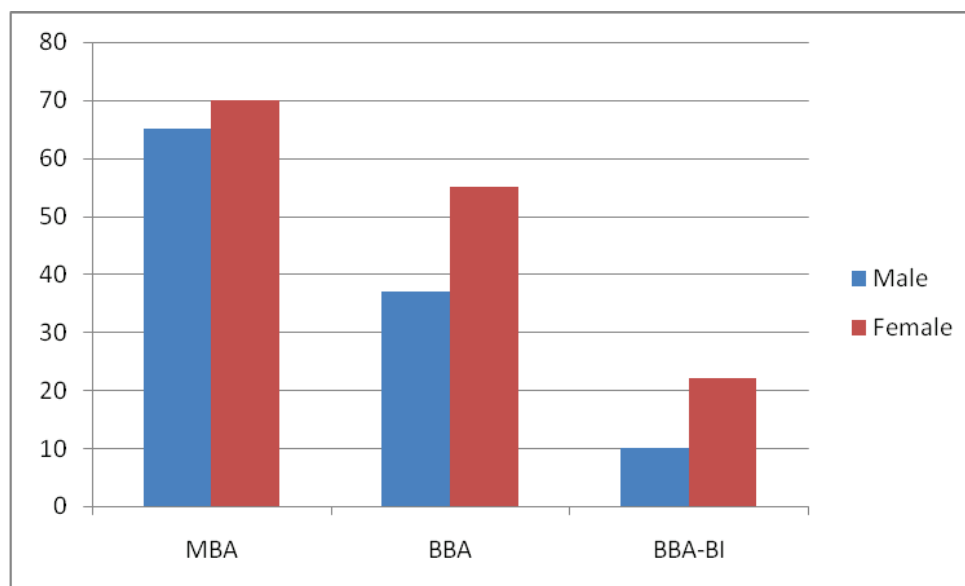


Fig. 9 Graduation Trend 2023

3.4 QAA Certification

The School of Business got the certificate of Quality Assurance and Accreditation from University Grants Commission in 2022. For continuous improvement of the quality, the school management committee, IQAC (Internal Quality Assurance Committee) and different cells at the school level have been performing different activities, e.g. faculty research grants, graduate research projects, faculty staff training, participation in the curriculum revision workshop, journal publication, updating the students database in the EMIS, networking and corporate relationship establishment, students career counseling, placement and welfare activities. Similarly, PUSOB Alumni Association, council of students' representative (a forum of class representatives) and student clubs (PUCMS, SHINE, SGBI and IDEA) have been performing different activities.

3.5 Educational Pedagogy

Teaching pedagogy at School of Business is a combination of various techniques such as tutorials, guest lectures, seminars, conferences, independent works, internship, field works, project works, researches, case studies, presentations, discussions, and many more.

Regular Lectures

With the combination of senior professors and young dynamic lecturers, the school provides pleasant & regular lectures as per the need of the curriculum along with session plan they have prepared in advance. Lecture sessions are interactive and facilitated by the faculty members to deliver in depth in the business studies. The class discussions are complemented with case analysis and presentations, reviews, and feedback of presentations, action learning through project works involving studies of real organization and practical internship.

Guest Lectures

The college regularly manages guest lecturers of professionals, practitioner, experts and experience personalities of various areas. The college arranges guest lecturers in four modalities: Pre-planned guest lecturers to support the course and curriculum which should be spread over each and every semesters/trimester. Guest lecturers of the practitioners who reflect their practical experiences and exposures from their working life. Guest lecturers arranged to develop the students' soft skills and life skills. The guest lectures on the contemporary and emerging issues in business, management and economics. The speakers for the guest lectures are invited from domestically and foreign countries.

Group Work

Students are exposed to group works of various kinds on regular basis with in and off the class hours. The faculties retain full authority to assign in-and off class group assignments as a part of internal evaluation in line with daily lesson-plan based on individual assessments. Groups are generally given special problems on various topics for the members to actively unfold solutions which are often analytical, survey based, literature review, and assessment types.

Presentation

With a view to complement the class discussions and lectures on varying topics, the study report presentation by students is a key pattern of teaching pedagogy at School of Business. Initiation is taken by the faculty members for the presentation on special topics in their subject areas when needed and every presentation is designed with the help of multimedia technology. The students are provided with technical and logistic support to prepare power point presentations on the topics assigned to them by the faculty as a part of internal evaluation.

Project Work

Project making is a core subject area for students to work individually as well as in groups at School of Business. Data based learning and research works are the key components of project work that help them search, compile, analyze and interpret the data.

It is compulsory for each MBA student to conduct an original research at the final trimester followed with scientific research methods and present the study report in the prescribed format of thesis to be acceptable by the university. This research project comprises of 3 credits. Graduate Research Project (GRP) is a partial requirement for the fulfillment of the MBA degree. A committee assigns supervisors to the students and frequently organizes seminars, trainings and workshops to both faculties and students

under the theme of scientific research methods. The GRPs are supervised by the experienced professors. The college also invites the experts from organizations related to the research work for feedback and suggestions and also disseminates the findings to the concerns.

In Bachelors level, BBA and BBA-BI students prepare research papers and they have to present it in the viva-voce organized as a compulsory part of curriculum. The students prepare many research papers based on primary and secondary data during their study period in the college. The completion of Project Work is compulsory in BBA and BBA-BI program. The projects are generally related to the areas of banking, finance, industries and trading companies, and other enterprising institutions.

The school aims to develop the research skill of the students from very beginning. In order to strengthen the research capacity, the school offers Econometrics course which is rarely offered by other management colleges in Nepal. The school also organizes separate training on statistical software operations for data analysis.

Internship

The MBA, BBA and BBA-BI students are compulsorily required to undertake internship during their study. The internship is accredited in the main course areas over the fixed tenure given to each individual student. The aim is to grant the students an exposure to practical and professional learning through internship program.

Event Management

The school provides opportunity to manage events like international/national seminars, conferences, sports, cultural programs and competitive events so that the students learn how to work with responsibility. Besides, the students' club also organizes various events.

Case Study

Among various teaching methods, Campus emphasizes in using case study method both in bachelor and master level classes. Case studies are real business situations that are used as a teaching tool to show the application of a theory or concept to real situations. Dependent on the goal they meant to fulfill, cases can be fact- driven and deductive where there is a correct answer, or they can be context driven where multiple solutions are possible. The instructors can create their own cases or can find cases that already exist in order to enhance the students' learning through active participation. It largely enhances problem solving and decision- making skills of students.

Group Discussion

Another teaching tool adopted by the school is group discussion where students debate in particular issue in structured way. They create and discuss on possible solutions and their effects on certain issues. Sometime, articles are reviewed before starting discussion. It enhances conceptual and communication skills.

Article Review

Under this method students are provided articles related to their syllabus, they study it and present to each other. Presentation, discussion and idea generation is centered to particular article. Instructor searches and provides relevant articles from different journals.

Role Play

Teachers are trained to use role play method to make learning effective and interesting. This method

could be used along with group discussion, where students give ideas from the view point of particular character only, with article review and lecture. It enhances expression skill in different way.

Educational Tour

Educational tours are occasionally organized for students and academicians as well where they can meet different people and situation. Such tours are combined with study and research activities of students as well. The school provides budget for educational tours.

3.6 Evaluation and Examination

The school has designed a format of internal evaluation comprising the components based on activities and academic performance. The internal marking is entirely controlled by the concerned teaching faculty and for this purpose, the bases are attendance, class participation, homework completion and submission, assignments, field works, project works, case analyses, and presentations are taken into consideration. In order to give emphasis to the written examinations, the college conducts regular unit tests, quizzes, mid-term and pre-board examinations. In undergraduate level, the feedback of the academic performance of the students is also communicated to the guardians and the concern faculty also provides advice for improvement in the case of slow learners. Even extra classes, tutorials and re-examination provisions are arranged for needy and slow learners. Finally, the students have to appear the University Board Examinations controlled by the Office of the Controller of Examinations of Pokhara University.

Assessment or evaluation of students' knowledge and skills is an integral part of the education system all over the world. The assessment system needs to find out what exactly the students have learnt and to what extent they have mastery over the subject matter and skills they have learnt. The evaluation system is equally important for all levels of students i.e. from school to university. Evaluation system may include different methods such as formal physical examination, practical examination, assignment, interview, observation etc. which are generally used in practice.

4. PHYSICAL PROGRESS

4.1. Infrastructural Development

School of Business has been improving its infrastructure facilities continuously. In this year, CC Camera was installed. Air condition was installed in in the class rooms of fifth storey. Class room bench and desk were purchased to maintained the Institute with well-furnished lecture Rooms, laboratories, common rooms, and independent computer labs.

The school has a tie up with hostels for girls students. The campus has high speed broad band Internet facility. Central library has good ambience with an adequate seating capacity. It has large number of books and subscriptions of National and International journals. The computer laboratories are well equipped with latest high-end desktops. Teaching-learning is being enhanced by implementing video lectures and by arranging workshops, seminars. There is a generator power backup availability.

The development of the infrastructure and the physical facilities available thus keep pace with the overall development of the institution. There is an effective mechanism for the maintenance of the infrastructure facilities. The school has an excellent library and computer facilities with easy access to all its constituents. Pokhara University Central Library has collection of more than 40,000 books on several disciplines and approximately 10,000 theses and GRR (Graduate Research Report). The library

is accessible from 6:30 am to 5.00 p.m. spacious reading room, open access to e-learning, foreign and Nepali research journals/magazines and research cubicles with internet connections cater to the needs of students and staff. ICT facilities are adequately available in the institution for academic purposes.

4.2 Educational Aid

Educational equipments, supplies and facilities are available in the class room, lab and library. Purified drinking water is being served to all the faculties, staffs and students. All class rooms are fitted with power point projector. The physical and educational facilities available in the school are presented in Table 9.

Table 9: Educational Aid

| S.N. | Particulars | Quantity |
|-----------|---|----------|
| 1 | Office Room (IAC, 201, 202, 206, 301, 402, 403, 404, 405, 406) | 10 |
| 2 | Class Room (101, 207, 208, 209, 303, 304, 305, 306, 407, 408, 409, 505, 506, 507) | 14 |
| 3 | Computer Lab | 2 |
| 4 | Seminar Hall | 1 |
| 5 | Three Faculty Rooms (With Separate Cubical) | 23 |
| 6 | First Aid Room | 1 |
| 7 | IQAC Room | 1 |
| 8 | RMC Office with Mini Library | 1 |
| Furniture | | |
| 1 | Bench | 205 |
| 2 | Desk | 230 |
| 3 | Cupboard | 30 |
| 4 | White Board/Smart Board | 15 |
| 5 | Office Table | 42 |
| 6 | Computer Table | 18 |
| 7 | Chair | 103 |
| 8 | Book Shelves | 12 |
| 9 | Sofa Set | 7 |
| 10 | File Cabinet | 14 |
| 11 | Visiting Chair 3 Seat | 5 |
| Equipment | | |
| 1 | CCTV 32" size monitor with 32 channels | 1 |
| 2 | Air Conditions | 4 |
| 3 | Desktop | 84 |
| 4 | Laptop | 51 |
| 5 | Multimedia Projector | 20 |
| 6 | Server | 1 |
| 7 | Printer/Multifunctional Machine | 22 |
| 8 | Photocopy machine | 1 |
| 9 | Water pumping electric motor | 1 |
| 10 | UPS Inverter and Batteries | 1 |
| 11 | Internet Rack | 1 |
| 12 | Router | 2 |
| 13 | Wireless Access Points | 10 |

4.3 Books/ Journal/ Reference Materials

Pokhara University Central Library (PUCL) was established along with the academic programs of University in 1999. It began with a collection of 200 volumes of books. Now, the collection exceeds more than 40000 volumes of books. In addition, there are the collection of periodicals, thesis and CDs, journals, e-journals, magazines and newspapers. This library is automated with Mumolas software where all internal tasks such as; book and patron management are being carried out by the software. RFID system has been applied by Library. For security purpose, library has been using CCTV cameras and alert gate with rfid system. As the library is an academic library, the main purpose of this library is to provide service to faculties, staff and student and researcher.

The main function of this library is to provide, information, resources and research support for its members. Including books, Library has been collecting Dissertation; Term report, ebooks, E Journal both physically and electronically. Now the library is growing day by day with its prompt collection.

PU Central Library is a member of national and International Organization for Online Resources, NeLIC; and Research4 life. More than 40 journal database can access via Research4life and Jstor can access via NeLIC. Central Library has subscribed for both Research4life and Nelic.

Library has created its own digital repository where master and bachelor level full text dissertation has been uploaded. Similarly, to provided bibliographic information of dissertation PUCL has created its own blog: www.pucl.wordpress.com Student can get all title of Dissertation via this blog. The total number of books in Central Library is shown in Table 10.

Table 10: Area wise Book Details in 2080/081

| S. No. | Particulars | Total Purchased |
|-------------------------------|-----------------------------------|-----------------|
| 1. | Management Books | 16,026 |
| 2. | Engineering Books | 11,223 |
| 3. | Health Science Books | 8,996 |
| 4. | Humanities & Social Science Books | 3,163 |
| 5. | Gift Books | 1,626 |
| Total books | | 40,934 |
| Thesis (Approximately) | | 10,000 |

5. FINANCIAL PROGRESS

The financial progress of School of Business for last three years, 2078/79, 2079/80 and 2080/81, is presented below in Table 11.

Table 11: Financial Analysis of Last Three Years

| Income Head/financial Year | 2078/079 | 2079/080 | 2080/81 |
|---|----------------------|----------------------|----------------------|
| Fee from Academic Activities | | | |
| Income from Academic Activities | 42,620,171.00 | 60,193,800.00 | 58,868,575.00 |
| Miscellaneous Income | 663,758.00 | 686,455.00 | 512,355.00 |
| Grants And Donation | | | |
| Grants received from Pokhara University | 467,505.81 | 473,866.02 | 430,132.98 |
| Grants & Donation received from UGC | 6,630,000.00 | 5,000,000.00 | 890,000.00 |
| Grants & Donation from Other Grants | - | - | |
| Other Income | | | |
| Interest Income | 2,002,928.41 | 2,446,330.27 | 2,074,108.63 |
| Total Income | 52,384,363.22 | 68,800,451.29 | 62,775,171.61 |
| | | | |
| Expenses Head/financial Year | 2078/079 | 2079/080 | 2080/81 |
| Regular Operating Expenditure | | | |
| Employee Cost | 41,264,107.93 | 53,582,993.04 | 52,572,579.23 |
| Operating Cost | 5,321,658.00 | 9,703,506.05 | 9,293,747.01 |
| Capital Expenditures | | | |
| Vehicle | - | - | - |
| Furniture & Fixture | 212,000.00 | 33,500.00 | 431,800.00 |
| Equipment | 445,000.00 | 320,000.00 | 1,073,599.97 |
| Books | - | - | - |
| Other Fixed Assets | 59,900.00 | 180,775.95 | 163,149.03 |
| Software | - | - | - |
| Total Expenses | 47,302,665.93 | 63,820,775.04 | 63,534,875.24 |

6. SOCIAL PROGRESS

6.1 School Management Committee and IQAC

Along with regular academic programs, the school of business performs various activities for continuous improvement of quality. For its smooth operation and to improve the quality, it has different committees and cells. At the top of the institution, the School Management Committee prepares strategic plans, policies and guidelines and then facilitates their implementation. Similarly, an Internal Quality Assurance Committee (IQAC) takes an active role in continuous improvement quality with the smooth functioning of the school. Both of the committees provide necessary guidance and support to faculties, staff and students to achieve the goal of the school and maintaining the relationship and coordinate with UGC, other departments of the university and external stakeholders.

The school of business prepared a strategic plan 2024-2029. The annual report 2022/2023 covering the different activities achieved within the year is published. An academic report was also prepared and submitted it to the University Grants Commission, Kathmandu Nepal. Similarly, professors, entrepreneurs, professionals and social leaders were invited as guest lecturers, experienced and contributed in different fields. They took the classes at the graduate and undergraduate levels in different dates. Some of them are Jose Alberto Maia Pereira (Portugal), Pritam Man Buddhacharya (an entrepreneur), Praksh Acharya (an entrepreneur), Apasara Subedi (Om Shanti), Kishor Adhikari, Milan Gyanwali (De Montfort University, England), and Hari Prasad Pande (Industrialist and Former Industry Minister).



6.2 Participation in Curriculum Development Process

A meeting among the 15 faculty members of SOB was organized to provide the suggestions for MBA and BBA/BBA-BI Curriculum Structure on 2080/08/26 (12 Dec 2023). The program was chaired by Purna B Khand, Executive Director of Curriculum Development and the chief guest and Special Guest of the program were Dr. Dipak B Bhandari, Registrar and Dr. Daya R Dhakal, Dean of Faculty of Management Studies.

6.3 Other Committee and Cell Activities

The Research Management Cell (RMC), Editorial Board of Journal of Business and Management (JBM), Self Assessment Team (SAT), Corporate Relation and Placement Cell, Faculty Research Committee, Graduate Research Project Committee, Project Work Committee, PUSOB Alumni Cell, Students Welfare and Career Counseling Cell, Education Management Information System (EMIS) Cell, and Entrepreneurship Support Program Committee performed different activities in their respective areas.

Different committees/ cell and their committee members are presented as below.

School Management Committee

| | |
|-----------------------|------------------|
| Daya Raj Dhakal, PhD | Chairman |
| Bal Ram Bhattarai | Member |
| Shrijan Gyanwali, PhD | Member Secretary |

Graduate Research Project Committee

| | |
|--------------------------|-------------|
| Surya Bahadur GC, PhD | Coordinator |
| Bal Ram Bhattarai, PhD | Member |
| Rabindra Ghimire, PhD | Member |
| Deepanjali Shrestha, PhD | Member |
| Pramod Giri | Member |

IQAC (Internal Quality Assurance Committee)

| | |
|--|-------------|
| Shrijan Gyanwali, PhD | Coordinator |
| Prof. Dr. Gyaneshwor Sharma | Member |
| Surya Bahadur GC, PhD | Member |
| Bal Ram Bhattarai, PhD | Member |
| Deepak Ojha | Member |
| Pramesh Paudel | Member |
| Pramod Giri | Member |
| Sunil Dhakal (Students Representative) | Member |

Journal Editorial Board

| | |
|--------------------------|-------------|
| Bharat Ram Dhungana, PhD | Coordinator |
| Deepanjali Shrestha, PhD | Member |
| Ananta Raj Dhungana, PhD | Member |
| Deepak Ojha | Member |
| Bandana Godar Thapa | Member |

Students Alumni Cell

| | |
|-----------------------|-------------|
| Rabindra Ghimire, PhD | Coordinator |
| Sujita Adhikari | Member |
| Subash Mall | Member |
| Laxman Bastola | Member |

Research Management Cell/Faculty Research Grants

| | |
|-----------------------------|-------------|
| Prof. Dr. Gyaneshwor Sharma | Coordinator |
| Pradeep Sapkota, PhD | Member |
| Pramod Giri | Member |

EMIS Cell

| | |
|-------------------|-------------|
| Ashish Thapa, PhD | Coordinator |
| Ujjwal Adhikari | Member |
| Pramod Giri | Member |
| Debaki Dahal | Member |
| Laxman Bastola | Member |

Corporate Relation and Placement Cell

| | |
|------------------------|-------------|
| Bal Ram Bhattarai, PhD | Coordinator |
| Deepak Ojha | Member |
| Ram Prasad Timilsina | Member |
| Shova Acharya | Member |

Project Work Committee

| | |
|-----------------------|-------------|
| Rabindra Ghimire, PhD | Coordinator |
| Subarna Bir JB Rana | Member |
| Bal Chandra Paudel | Member |

Entrepreneurship Support Program Committee

| | |
|------------------------|-------------|
| Bal Ram Bhattarai, PhD | Coordinator |
| Yog Raj Lamichhane | Member |
| Subash Malla | Member |
| Pramesh Paudel | Member |
| Ashwin Karakheti | Member |

Students' Welfare and Career Counseling Cell

| | |
|-------------------|-------------|
| Subash Malla | Coordinator |
| Keshav Lamichhane | Member |
| Toran Bahadur B K | Member |

Research Management Cell (RMC)

The Research Management Cell took the initiative to prepare the academic audit report, and the School of Business submitted it to UGC. The committee has been performing research related activities and providing the research grants to SOB faculties. In this year, eight faculties were selected for the faculty research grants after successfully defending their research proposal and incorporating the experts' comments. The selected research work and their topics are as below in Table 12.

Table 12: Faculty Research Grants

| S. No. | Researcher | Research Topic |
|--------|-------------------------|---|
| 1 | Dr. Surya Bahadur G.C. | The Role of Stakeholder Engagement and Sustainability Orientation on Impact of Social Enterprises of Nepal |
| 2 | Dr. Rabindra Ghimire | Corporate Governance and Financial Performance in Nepalese Insurance Industry |
| 3 | Dr. Bharat Ram Dhungana | Nexus Between Financial Literacy and Entrepreneurial Success: A case of Pokhara, Nepal |
| 4 | Dr. Purna Bahadur Khand | Household's Willingness to Pay for Improving Solid Waste Collection Services: A Case of Pokhara Metropolitan City |
| 5 | Bishwo Raj Parajuli | Transitioning Cities: Semiotic Analysis of Selected Urbanscape by Nepali Artists |
| 6 | Deepak Neupane | Socio Economic Factors Influencing the Entrepreneurial Intentions Among the Students Among the Students of Pokhara University |
| 7 | Sujita Adhikari | Assessment of Public Transport Service Quality Perception Among Students of Constituent College of Pokhara University |
| 8 | Bal Chandra Paudel | Motivating Factors Towards Study Abroad Among 10+2 Students in Kaski |

JBM Editorial Board

Journal of Business and Management-JBM (ISSN:2350-8868) is being published regularly. There is an increment in the availability of articles from national and international authors. The JBM is indexed in NepJol. It's Vol. VIII, Issue 1, was published including 12 research articles. The individual article has assigned the DOI number. The link of the journal is available at <https://www.nepjol.info/index.php/jbm>

Graduate Research Project Committee

Necessary guidance and supervision are being provided to the MBA students for preparing their synopsis, proposal, fieldwork and report writing activities by this committee. The supervisors are assigned to support the students. In this year, one hundred twenty-two students completed their Graduate Research Report after defending their final viva with the external examiner.

Project Work Committee

The committee makes necessary arrangements for supervision, guidance and evaluation of Project Report of BBA and BBA-BI students. The committee also supports for publication of students research findings with coordination and correspondence to the related Journals.

Self Assessment Team (SAT)

The Self Assessment Team (SAT) has been providing necessary support for quality maintenance of the school. In this year, the committee prepared and submitted the proposal to the UGC for nurturing quality education, performance based funding and such other areas. It has been monitoring school activities and providing necessary support for continuous improvement of the quality.

Education Management Information System (EMIS) Cell

The Education Management Information System (EMIS) Cell has updated the records of newly admitted students of BBA/BBA-BI and MBA Program. It also supported for securing the best internet service provider to the school. The unit updated and uploaded the different information and activities of the School.

Corporate Relation and Placement Cell

The Corporate Relation and Placement Cell works for the necessary arrangement of internship placement of undergraduate and graduate level students. The unit works to establish the linkage with national and international business organization for working in a collaborative approach.

A Memorandum of Understanding was signed on 23 Baisakh 2981 with Pokhara Metropolitan City for student placement. Thirty SOB students got a chance for a paid internship in different wards with a six months probation period. The agreement was signed jointly by Mayor Dhan Raj Acharya and SOB Director Dr. Shrijan Gyanwali. MBA Program Coordinator Dr. Bal Ram Bhattarai, Campus Chief - Prithivi Narayan Campus Prof. Dr. Saroj Koirala and some other dignitaries were present in the agreement signing ceremony.



Students' Welfare and Career Counseling Cell

Students' welfare and career counseling cell provides necessary supports to students' club for conducting their meeting and activities. Importantly, the cells bridges the linkage between faculties and students by appointing, empowering and motivating the two Class Representatives from each section of all semesters/trimesters of undergraduate and graduate programs. In this year, the cell provided necessary support to PUCMS, SHINE, SGBI and IDEA for conducting their activities.

Students Alumni Cell

Students Alumni Cell performs different activities to promote and facilitate to Pokhara University School of Business Alumni Association (PUSOBAA). PUSOBAA has been organizing different activities like alumni meet, workshop and seminars on contemporary issues regularly. With the necessary support of this cell, third Annual Meeting and 2nd Convention of SOB Alumni Association was held on 1 May 2024 on the chairmanship of Umesh Acharya. The chief guest of the program was Dean, Faculty of Management Studies, Dr. Dayaraj Dhakal. The convention elected new committee on the Chairpersonship of Kalpana Subedi.

6.4 National and International Relationship

A meeting with University Grants Commission (UGC) representatives and PU executives was organized on 14 Minsir 2080 (30 November 2023). SOB Director, Shrijan Gyanwali participated the meeting. Acting VC Prof. Rajesh Thagurathi welcomed to UGC Delegates. Similarly, Online meeting with UGC was organized on 24 Minsir 2080 (10 Dec 2023) for discussion of NEHEP reformation.

Yog Raj Lamichhane, SOB faculty and member of PU Executive Council participated in international conference at USA and presented his research paper.

Employment Skills Development Awareness program was organized to four constituent college students. Approximately Forty student of BBA/BBA-BI joint the program that was organized by US Embassy, Kathmandu, Nepal, on 13 Dec 2023 (27 Minsir, 2080).

6.5 Faculty Development Initiative

School of Business organized Faculty Development Program on Falgun 18 and 19, 2080. Chief Guest of the program was Prof. Dr. Dipak Bahadur Bhandari, Registrar. Dr. Daya Raj Dhakal, Dean, Faculty of Management Studies, was special guest of the program. SOB faculties and staffs participated the program that was held at Dhampus, Kaski.

During the year 2080/81, five faculties Dr. Pradeep Sapkota, Dr. Deepesh Ranabhat, Dr. Ashis Thapa, Deepak Neupane and Bishwo Raj Parajuli returned back from the study leave. Sujita Adhikari, Deepak Ojha, and Hemkanta Poudel joint the PhD studies in Pokhara University, Faculty of Management Studies.

Dr. Deepmala Shrestha and Dr Dipesh Ranabhat participated the NEHEP orientation and workshop program on 13 and 14 Minsir 2080 (29 and 30 Nov 2023) organized by University Grants Commission, Nepal.

Dr. Rabindra Ghimire, Dr. Purna Bahadur Khand, Dr. Shrijan Gyanwali, Yog Raj Lamichhane, Dr. Ashis Thapa and Ujjal Adhikari participated ToT training on Curriculum Development. Eight days training was organized at weekend (Friday & Saturday). The first session was started on 7 Asar and it was completed on 29 Asar, 2081. The training was organized by Pokhara University with the support of UGC. Dr. Umesh Shing Yadav, Dr. Surya Bahadur G.C. and Bishow Nath Lamichhane were in the training organizing team.

7. STUDENTS LIFE AND ENGAGEMENT

Apart from the daily activities in class room students are encouraged in extracurricular activities. By handling the different events and projects, the students get the real work life experience. In this process students get opportunity to explore their inner potentialities and hidden talents. Student clubs activities are discussed as below.

Council of Students' Representative (CSR)

Two students from each section are nominated as the Class Representatives (CR). The representatives work as a bridge between teachers and students. They do necessary coordination and communication for smooth functioning of the teaching learning activities. CR contributes for collecting and forwarding the students' suggestion to the management that would be helpful to publish the internal examination routine, organize extracurricular activities and such other planning. They organized the meeting regularly and invite faculty members and staffs as necessary. Class representatives have been supporting to conduct graduation ceremony to the passing out students.

There are 30 class representatives in bachelors level and 12 in the Masters level. A council of Students Representatives (CSR) comprises total 42 members. A president is elected by the members as a focal person. Subigya Thapa is appointed in the President of CRS after successful completion of tenure Sunil Dhakal in this year.

Pokhara University Council of Management Students (PUCMS)

Pokhara University Council of Management Students (PUCMS) organized Annual General Meeting (AGM) and Convention on 32 Jestha 2081. Executive committee was formed on the chairmanship of Bibek Poudel. PUCM organized financial quiz competition on 28 Baisakh 2081 (10 May 2024). Welcome program to new members was organized on 20/06/2080. PUCMS organized an orientation program on stock market on 19 Jestha 2081 on the chairpersonship of Club President Arjun Timsena.



Sharing Harmony in New Environment (SHINE)

Sharing Harmony in New Environment (SHINE) organized annual meeting on 25 Poush 2080. Anup Bhandari was elected in the President of the club after successful completion the tenure by Anita Adhikari. SHINE organized two book fares in different dates, 4 to 6 Mansir 2080 (20 – 22 Dec 2023) and 24 to 26 Baisakh 2081 (6 to 8 May 2024). In the book fair, interested students could buy the books in reasonable price that were sold by seniors.

SHINE organized interfaculty vision board competition on 17 Ashar 2081. The chief guest of the program was SOB Director Dr. Shrijan Gyanwali and the program was chaired by SGBI president Anup Bhandari. Eight participating teams presented the vision board with their innovative idea and implementing plan in the three different given theme. The first, second and third got the cash prize and all participants awarded with the certificate. The judge of the competition were Dr. Ashish Thapa, Dr. Dipesh Ranabhat and Sunil Dhakal.



Study Group for Banking and Insurance (SGBI)

Study Group for Banking and Insurance (SGBI) organized welcoming program to newly joining members on 26/06/2080. SGBI organized test drive event of KONA electric vehicle in collaboration with Hundai showroom on 17 Shrawan 2080 (2 August 2023). SGBI organized a seminar on Prospectus of Insurance Business in Nepal to BBA-BI 1st semester students on 2080 Mansir 13 (29 Nov 2023). SGBI organized a speech competition on 'Bank: a Pillar of Development' on 4 Mansir 2080 (20 Dec 2023). SGBI organized street drama and other cultural activities for awareness creation on the insurance. The program was organized on 'Insurance Day' 1 Jestha, 2081. SGBI organized insurance and financial awareness program on 9 Jestha 2081.



Development Evaluation Achievement and Success (IDEAS)

Involvement Development Evaluation Achievement and Success (IDEAS) organized one day training on SPSS on 9 – 11 Jestha 2081. Dr. Surya Bahadur GC facilitated the training to 35 MBA students from different Trimesters. Ashmita Paudel was elected in the President of IDEA after successful completion of study by Subigya Thapa.

Candle Lightening event was organized by all the clubs (PUCMS, SHINE, SGBI and IDEA) jointly on 22/06/2080 for the peace of departure souls in Israel in the insurgency between Hamas and Israel. Cloths distribution to children at Omshanti Children Home was organized jointly by PUCMS, SHINE, SGBI and IDEA on 28/06/2080. Sports meet 2024 was started on 9 June, 2024. The opening game was volleyball started by handing over the ball to player by PU Student Welfare Director, Santosh Gupta, SOB Director Shrijan Gyanwali, BBA/BBA-BI Coordinator, Dipak Ojha and Students Welfare and Career Counselling Cell Coordinator Subash Malla jointly. Sports meet committee organized a prize distribution ceremony on 17 Ashar 2081 to the winners of last years' event. Brief information of different clubs is presented in Table 13.

Table 13: Students Council and Clubs

| S. N. | Students Council and Clubs | Name of Student | Area of Study |
|-------|--|------------------|---------------|
| 1 | Council of Students' Representative (CSR) Chair | Ashmita Paudel | MBA |
| 2 | Council of Students' Representative (CSR) Member | Rupendra Sapkota | BBA |
| 3 | Council of Students' Representative (CSR) Member | Kusum Shrestha | BBA-BI |
| 4 | Pokhara University Council of Management Students (PUCMS) | Bibek Paudel | BBA-BI |
| 5 | Sharing Harmony in New Environment (SHINE) | Anup Bhandari | BBA |
| 6 | Study Group for Banking and Insurance (SGBI) | Kusum Shrestha | BBA-BI |
| 7 | Involvement Development Evaluation Achievement and Success (IDEAS) | Ashmita Paudel | MBA |

8. RESEARCH AND INNOVATION

8.1 Faculty Research Publication and Dissemination

Significant number of research papers were published by SOB faculties. They also participated in national and international conference within the country and abroad. The papers published by faculty members is presented as below.

Publication

Bal Chandra Paudel and Deepesh Ranabhat. (2023). Entrepreneurial Intention of Management Students In Pokhara University. *Nepalese Journal of Insurance and Social Security*.

Bharat Ram Dhungana (2023). Factors Affecting Investor Decisions on Initial Public Offering in Nepal. *Journal of Emerging Financial Markets and Policy*, 2(1), 26-49. <https://slfa.lk/jefmp/journalissues-3/>

Bharat Ram Dhungana (2023). Government Health Expenditure and Policy for Public Health Outcomes: A Systematic Literature Review. *MedS Alliance Journal of Medicine and Medical Sciences*, 3(6), 84-91. <https://doi.org/10.3126/mjmmms.v3i5.60169>

- Bharat Ram Dhungana (2023). Stock Market Development and Economic Growth of Nepal. *Journal of Business and Social Sciences Research*, 8(2), 31–50. <https://doi.org/10.3126/jbssr.v8i2.62132>
- Bharat Ram Dhungana (2023). Stock Market Development and Economic Growth of Nepal. *Journal of Business and Social Sciences Research*, 8(2), 31–50. <https://doi.org/10.3126/jbssr.v8i2.62132>
- Bharat Ram Dhungana (2024). Employee Turnover Intention in a Service Industry: A Systematic Literature Review. *Migration Letters*, 21(S7), 1481–1494. Retrieved from <https://migrationletters.com/index.php/ml/article/view/9020> Page 2 of 3
- Bharat Ram Dhungana (2024). Liquidity Crunches in the Banking Industry of Nepal. *INTELLIGENCE Journal of Multidisciplinary Research*, 3(1), 17–36. <https://doi.org/10.3126/ijmr.v3i1.65425>
- Bharat Ram Dhungana (2024). Tourism Policy for Sustainable Mountain Tourism: Systematic Literature Review. *Journal of Tourism and Himalayan Adventures*, 6(01), 45–57. <https://doi.org/10.3126/jtha.v5i01.56187>
- Bharat Ram Dhungana, Amrit Adhikari, Deepak Ojha, Deepesh Ranabhat, Keshav Lamichhane, and Sujana Acharya (2023). Customer Perception toward Digital Financial Services: A Case of Pokhara, Nepal. *Butwal Campus Journal*, 6(1), 1–11. <https://doi.org/10.3126/bcj.v6i1.62573>
- Bharat Ram Dhungana, Deepesh Ranabhat, Deepak Ojha, Keshav Lamichhane, Sujana Acharya, and Sadiksha Subedi (2023). Empowering Women through Microfinance: A Case Study of Jalpa Samudayik Laghubitta Bitty Sanstha Ltd. in Pokhara Metropolitan City. *The Saptagandaki Journal* 14(1), 68–86. <https://doi.org/10.3126/sj.v14i01.64316>
- Bharat Ram Dhungana, Sushma Gautam, Deepesh Ranabhat, Deepak Ojha, Keshav Lamichhane, Sujana Acharya (2024). Identifying the Determinants of Dividend Payout Ratios in Nepalese Commercial Banks. *Journal of Business and Social Sciences Research*, 9(1), 1–16, Ace Institute of Management, Pokhara University. <https://doi.org/10.3126/jbssr.v9i1.67984>
- Bharat Ram Dhungana (2023). Impact of Financial Inclusion on Monetary Policy Effectiveness in Nepal. *Pacific Business Review International (Web of Science Indexed Journal)*, 16(2).
- Deepak Neupane (2023). Trade Openness and Economic Growth of Nepal: An Econometric Analysis. *Journal of Business and Management*, 7(02), 32–45.
- Deepesh Ranabhat (2024). Investigating the Effects of Financial Inclusion: A Systematic Review. *Quest Journal of Management and Social Sciences*.
- Deepesh Ranabhat, Bhawana Sharma Timilsina, and Mala Ranabhat (2023). Job Satisfaction of Female Employees in Commercial Banks of Pokhara. *INTELLIGENCE Journal of Multidisciplinary Research*.
- Deepesh Ranabhat, Hemkanta Poudel, Pradeep Sapkota, and Mala Ranabhat (2023). Demographic factors affecting customer's perception toward the use of internet banking in Pokhara metropolitan city of Nepal. *The Journal of Business and Management*.
- Deepesh Ranabhat, Narinder Verma, Peadeep Sapkota, Shanti Devi Chhetri (2023). Effects of Financial Literacy on Financial Inclusion: Evidence from Nepal Gandaki Province. *Lecture Notes in Networks and Systems*.
- Deepesh Ranabhat, Sujata Adhikari, and Narinder Verma (2023). Factor Influencing Online Purchase Intention Among University Students in Nepal. *Lecture Notes in Networks and Systems*.

- Deepesh Ranabhat. (2023). Effect of Financial Literacy on Utilisation of Financial Services in Kaski District. *Journal of Business and Social Sciences Research*.
- Deepesh Ranabhat. (2023). Impact of Financial Literacy on the Socio-Economic Well-being of People in Kaski District, Nepal. *Economic Journal of Development Issues*.
- Hem Kanta Poudel (2023). Demographic Factors Affecting Customer's Perception Toward the Use of Internet Banking in Pokhara Metropolitan City of Nepal. *Journal of Business and Management*.
- Hem Kanta Poudel, Deepesh Ranabhat, Pradeep Sapkota, and Mana Ranabhat (2023). Adoption of Digital Payment System among the Youths in Pokhara Metropolitan City. *Interdisciplinary Journal of Innovation in Nepalese Academia*.
- Pradeep Sapkota, Kamal Kant Vashisth, and Deepesh Ranabhat (2023). A Systematic Literature Review on Factors Affecting Rural Tourism. *Lecture Notes in Networks and Systems*
- Pradeep Sapkota, Kamal Kant Vashisth, Deepesh Ranabhat, Shanti Devi Chhetri (2023). Tangible Factors Affecting Tourist Satisfaction and Revisit Intention in Gandaki Province, Nepal. *Lecture Notes in Networks and Systems*
- Rabindra Ghimire, and Ram Krishna Chapagain (2023). Farmers' Satisfaction towards the Agriculture Insurance: A Case of Chitwan and Kaski Districts of Nepal. *The International Research Journal of Management Science*, 8(1), 123-139.
- Rabindra Ghimire, D. Acharya, Pushkar S. Raikhola, Kusum R. Subedi, B. Devkota, Radha Bhattarai, and K.P. Pathak (2024). Qualitative evaluation of the health insurance program in Nepal: Expectations beyond limitations. *World Medical & Health Policy*, 16(1), 37-56 (Q1 Index).
- Rabindra Ghimire, and Ram Krishna Chpagain (2023). Farmers' Satisfaction towards the Agriculture Insurance: A Case of Chitwan and Kaski District Nepal. *The International Research Journal of Management Science*, 8(1), 123-139.
- Rabindra Ghimire, Jitendra Kumar Singh, and Dev Raj Acharya (2024). Social Health Insurance Policy of Nepal: Issue of Equity and Equality. *Asian Journal of Population Sciences*, 3(1), 1-12. <https://doi.org/10.3126/ajps.v3i1.61789>
- Rabindra Ghimire, Yadav Maani Upadhyaya, and Siva Raj Ghimire (2023). Determinants of financial performance in Nepalese nonlife insurance companies: a panel data analysis (Q3 Index).
- Ram Krishan Chapagain (2023). Experiences of Marital Intimacy among Nepali Married Couples: A Transcendental Phenomenological Approach.
- Ram Krishna Chapagain (2023). Alternative strategies of for-profit, not-for-profit and state-owned Nepalese microfinance institutions for poverty alleviation and women empowerment.
- Ram Krishna Chapagain (2023). Impact of Financial Inclusion on Monetary Policy Effectiveness in Nepal. Web of science indexed journal.
- Ram Krishna Chapagain (2023). Perceptions of Employability of Undergraduate Business Program Graduates: A Qualitative Analysis.
- Ram Krishna Chapagain (2024). A Retrospective Review on Social Marketing and Sustainability. *International Journal of Novel Research and Development*, 9(5).

- Ram Krishna Chapagain (2024). Sustainable Financing Initiatives and Bank Performance: A Bibliometric Analysis. *Indian Journal of Finance* 18(8), 22 – 43.
- Santosh Kumar Gurung, Ram Krishna Chapagain, Bharat Ram, Dhungana, Salina Shrestha and Sunita Sharma (2023). The Influence of Demographic and Job-Related Characteristics on Nurses: Compassion Satisfaction and Fatigue. *International Journal of Occupational Safety and Health (Q4 Indexed Journal)*, 13(4), 529–539. <https://doi.org/10.3126/ijosh.v13i4.51447>
- Shanti Devi Chhetri, Devesh Kumar, and Deepesh Ranabhat (2023). Investigating research in human resource analytics through the lens of systematic literature review. *Human Systems Management*.
- Shrijan Gyanwai, Deepesh Ranabhat, and Samjhana Koirala (2024). Empowerment of Women through Entrepreneurship in Gorkha District, Nepal. *INTELLIGENCE Journal of Multidisciplinary Research*.
- Surya Bahadur GC Santosh Kumar Gurung, Umesh Shing Yadav and Bharat Ram Dhungana (2024). The effect of higher education service quality on satisfaction among business students in India and Nepal. *Cogent Education, Taylor & Francis*. DOI: 10.1080/2331186X.2024.2393521
- Surya Bahadur GC, Santosh Kumar Gurung, Subarna Bir JB Rana and Bhart Ram Dhungana (2024). e-Governance, citizen satisfaction and net benefits: the moderating effect of digital divide. *Cogent Education, Taylor & Francis*. DOI: 10.1080/23311975.2024.2402512

Conference and Workshop Participation

- Bibek Karmacharya (2024) presented a paper in international conference organized by Gupteshwor Mahadev Multiple Campus on 5-6 July 2024
- Deepak Neupane (2023). Paper Presented on Relative Effectiveness of Monetary and Fiscal Policy Measures on the Economic Growth of Nepal, International Conference on Sustainable Development, June 23-24, 2023, organized by Faculty of Humanities and Social Sciences, Pokhara University.
- Deepesh Ranabhat (2023). A Tourism and its Role in the Sustainable Development of Andaman and Nicobar Islands from the Residents' Perspective. 7th International Conference on Intelligent Computing & Optimization on 26th -27th October 2023.
- Deepesh Ranabhat (2023). Systematic Review on the Role of Tourism in Sustainable Development. 7th International Conference on Intelligent Computing & Optimization on 26th -27th October 2023.
- Rabindra Ghimire (2024) Paper presented in International Conference organized by Gupteshwor Mahadev Multiple Campus on July 5-6, 2024.

8.2 Entrepreneurship Support Program

In the support of University Grants Commission, School of Business provided the seed fund grants loan to three business plan. Ramin Ghimire and his colleagues got the first installment of 24,00,000.00 (60% of 40,00,000.00) for their start-up plan, Aswat-Thama, aiming to produce the handicrafts by processing banana fiber. Sahil Kafle got 24,00,000.00 (60% of 40,00,000.00) for his tyre recycling project. Similarly, Bina Sharma and her parents got 9,00,000.00 (60% of 15,00,000.00) for their Thrifty Heaven, cloth recycling project. The seed fund was handed over on 21 Jestha 2081. The chief guest of

the ceremony was Vice Chancellor, Prof. Dr. Prem Narayan Aryal. The Special Guest and Guest of the Program were Registrar Prof. Dr. Dipak B Bhandari and Dean, FMS, Dr. Daya Raj Dhakal respectively. There was presence of seed fund receivers parents, SOB faculty, staff and students representatives. The ceremony was held on the chairmanship of SOB Director, Dr. Shrijan Gyanwali.



विद्यार्थीका उद्यमलाई आर्थिक सहायता

समाधान संवाददाता
पोखरा, २३ जेठ



पोखरा विश्वविद्यालय
POKHARA UNIVERSITY

पोखरा विश्वविद्यालय स्कूल अफ बिजनेसमा सञ्चालित उद्यमशीलता सहायता कार्यक्रम अन्तर्गत विद्यार्थीलाई सहायता रकम हस्तान्तरण गरिएको छ । स्कूल अफ बिजनेसले ३ वटा व्यावसायिक योजनाका लागि विश्वविद्यालय अनुदान आयोगमार्फत प्रदान गरिएको रकम सम्बन्धित विद्यार्थीलाई वितरण गरेको हो । विश्वविद्यालयका उपकुलपति प्राडा प्रेमनाथराय अर्याल, रजिस्ट्रार प्राडा दीपकबहादुर भण्डारी, व्यवस्थापन संकायका डीन डा दयाराज धकाल, स्कूल अफ बिजनेसका निदेशक डा श्रुजन शर्मासमेतको उपस्थितिमा विद्यार्थीसँग अनुदान सम्झौता भएको थियो । त्यस अवसरमा विद्यार्थीका अभिभावकसमेत उपस्थित भएका थिए ।

प्रस्तुतीकरणबाट छनोट भएका ३ व्यावसायिक योजनालाई सहायता गरिएको हो । सहिल कान्तेको टायर रिसाईबिलिङ प्रयावटालाई ४० लाख, रमिन शिमीको केराको बोक्राबाट हस्तकला बनाउने 'अस्वयामा'का लागि ४० लाख र बिना शर्माको बेस्टी हेमनका लागि १५ लाख प्रदान गरिने भएको हो । विद्यार्थीहरूलाई पहिलो किस्तावापत सोमबार ६० प्रतिशत अनुदान रकममा ४ वर्षसम्म व्याज लाग्दैन । त्यस अवधिभित्र उनीहरूले रकम फिर्ता गरेपछि नयाँ उद्यमलाई प्रदान गरिने छ । स्कूल अफ बिजनेसले व्यावसायिक योजना निर्माण तथा सञ्चालनसम्बन्धी

नन त्रेडिङ कोर्स निर्माण गरी ५ दिने तालिम दिएको थियो । तालिमपछि माग गरिएका व्यावसायिक योजनामध्ये पहिलो चरणको प्रस्तुतीकरण गराई ५ वटा व्यावसायिक योजना छनोट गरी विश्वविद्यालय अनुदान आयोगमा पठाइएको थियो । विश्वविद्यालयले उद्यमशीलता सहयोग कार्यक्रम चलाइरहेको छ । विद्यार्थीका व्यावसायिक योजना छनोटका लागि बलराम भट्टराईको संयोजकत्वमा एउटा समिति थियो । समितिले सिफारिस गरेका ५ विद्यार्थीका व्यावसायिक परियोजनामध्ये विश्वविद्यालय अनुदान आयोगबाट ३ वटा छनोटमा परेका थिए ।

9. REGULAR ACTIVITIES

School of business executed student enrollment, their orientation, academic tour, socialization, examination and extracurricular activities in a regular basis. Some of them are mentioned as below.

- Orientation program to new students of BBA/BBA-BI was organized on 9 Mangsir 2080 (25 November 2023). The Chief Guest of the program was Honorable Minister, Sushila Simkhada, Ministry of Social Development and Health.
- Orientation program to new students of MBA 2023 August Intake was organized on 22 Mansir 2080. SOB faculty members and guest speakers facilitated the different session to the students. Similarly, an orientation program to MBA 2024 March intake was organized on 3 Baisakh 2081 The Chief Guest of the program was Dean, Faculty of Management Studies, Dr Daya Raj Dhakal. The guest speaker of the program was Ganesh Bahadur Bhattarai, entrepreneur, sports meet and social activities. The program was chaired by SOB Director, Shrijan Gywanwali.
- Graduation Ceremony for MBA 2020 August intake JH & 2021 March Intake FT students was organized on 14 Poush 2080 (30 Dec. 2023). Chief guest of Program was Dean, Faculty of Management Studies, Dr. Dayaraj Dhakal and the program was chaired by SOB Director, Shrijan Gyanwali. Class Representatives (Sunil Dhakal, Samita Neupane, Kriti G.C. and Prabin Sagar Thapa) were awarded with certificate for their valuable contribution serving as Class Representative (CR). Professors choose the four best students (Shristi Bhurtel, Mahesh Devkota, Ranjana Kumari Thagunna and Sunil Dhakal) based on academic performance and their talent show performance.
- Graduation Ceremony for MBA students 2021 August intake (FT) was organized on 3 Chaitra 2080. Chief guest of program was Dean of the Faculty of Management Studies, Dr. Dayaraj Dhakal and the program was chaired by SOB Director, Shrijan Gyanwali. Class Representatives (Bikash Poudel and Samjhana Poudel) were awarded with the certificate of appreciation for their valuable

contribution serving as class representative. Corporate Governance Seminar was also organized on that occasion.

- Best wishes and farewell program for students of 8th semester BBA and BBA-BI was organized on 32 Shrawan 2080 and on 1 Bhadra 2080 respectively. Class representatives (CR) of passing out students were awarded with the certificate of appreciation for their dedication, constant efforts and coordination for making class room activities effectively. The certification was handed over on 7th Magh, 2080 at IAC Hall.
- An Industrial Visit was organized to MBA JH 5th Trimester students from 31 August to 3 September 2023 (14-17 Bhadra 2080). SOB faculty Dr Bharat Ram Dhungana participated in the industrial visit.
- MBA IV Trimester (FT) students visited to different industries during their 5 days industrial tour on 15 - 19 Kartik 2080 (1 - 5 Nov 2023). SOB faculties Krishna Raj Bhurtel and Ashish Bhujel participated in the tour. MBA V (JH) students visited different industries on 18 - 22 Baisakh.
- An industrial visit was organized to MBA II FT and MBA III FT students on 21 - 22, Baisakh, 2081. Assistant Professor Subash Malla led the trip.
- BBA BI VII Semester students visited to different industries during their 5 days industrial tour on 17 - 21 Mansir 2080 (3 - 7 Dec 2023). BBA/BBA-BI Program Coordinator Deepak Ojha participated in the tour.
- Employment Skills Development Awareness program was organized to the students of 4 constituent colleges. Approximately forty students of BBA/BBA-BI joined the program that was organized by US Embassy, KTM Nepal on 13 Dec 2023 (27 Mansir, 2080).
- BBA V semester students visited to different industries during their 5 days industrial tour on 24 - 28 Mansir 2080 (10 - 14 Dec 2023). Ram Prasad Timsena led the tour.
- MBA 2nd Trimester students visited Surya Nepal on 13 Baisakh 2081. An interaction with company representatives and factory observation was organized during the visit. Shrijan Gyanwali led the industrial tour.
- PU students' hult prize team organized an orientation session to management students for applying to participate in the business idea pitching competition. Similarly, many students voluntarily involved to celebrate Sharaswati Puja with worship and cultural activities.
- Two students Prakash Parajuli, BBA and Anubhuti Ghimire, BBA-BI, were selected for students exchange program to France and Czech Republic.
- RMC, Editorial Board, SAT, Corporate Relation and Placement Cell, Faculty Research Committee, PUSOB Alumni Cell, Students Counseling and Welfare Cell, EMIS Cell, Graduate Research Committee, Project Work Committee and Entrepreneurship Support Program Committee were reformed.
- Faculty and staff meeting, and different cell and committee meeting were organized regularly.
- Class room of fifth floor were installed the air condition. Computer, printer, furniture and such other equipment's were purchased and repairing as per the requirement. CC camera installation along with procurement of Internet related devices is done. Similarly PU SOB bus has been repaired as necessary.

10. ISSUES AND STRATEGIC RESPONSE

10.1 Issues and Challenges

- Applicants’ number for the admission in Masers Level program is decreasing.

10.2 Plan for Addressing the Issues and Challenges

- An academic building with advance facilities is being constructed with well facilities.
- Encourage student clubs to organize extra curricular activities for their effective learning.

ANNEX 1

BUDGET FOR THE FISCAL YEAR 2081/82

| पोखरा विश्वविद्यालय | | | | |
|--|-------------------------------------|-----------------------------------|-----------------------------------|---------------------------------|
| स्कूल अफ बिजनेस, व्यवस्थापन अध्ययन संकाय | | | | |
| आ. व. 2081/082 को स्वीकृत बजेट | | | | |
| बजेट कोड नं. | बजेट शिर्षक | आ. व. 2079 र 080 को वास्तविक खर्च | आ. व. 2080 र 081 को वास्तविक खर्च | आ. व. 2081 र 82 को स्वीकृत बजेट |
| 50100 | पूँजिगत खर्च | | | |
| 50101 | जग्गा | | | |
| 50102 | जग्गा विकास | | | |
| 50103 | भवन | | | |
| 50104 | सवारी साधन | | | |
| 50105 | फर्निचर | 34 | 432 | 1,299 |
| 50106 | कार्यालय उपकरण | 118 | 313 | 590 |
| 50107 | वैज्ञानिक तथा शैक्षिक उपकरण | 202 | 761 | 1,515 |
| 50108 | सडक, ढल, पर्खाल | | | |
| 50109 | विद्युत तथा पानी | | | |
| 50110 | अस्पताल उपकरण | | | |
| 50111 | विविध सम्पति | 181 | 163 | 424 |
| 50112 | सफ्टवेयर निर्माण, खरिद | | | |
| 50201 | पुस्तक | | | |
| | जम्मा | 535 | 1,669 | 3,828 |
| 20100 | संचालन खर्च | | | |
| 20100 | शिक्षक, कर्मचारी खर्च | | | |
| 20101 | तलब शिक्षण | 32,224 | 30,388 | 34,745 |
| 20102 | तलब र खर्च: गेष्ट फ्याकल्टी | 92 | 30 | 600 |
| 20103 | तलब प्रशासन | 6,799 | 7,227 | 11,413 |
| 20104 | संचयकोष अनुदान | 2,610 | 2,589 | 3,324 |
| 20105 | उपदान पेन्सन | 2,512 | 2,455 | 3,171 |
| 20106 | दक्षता अभिवृद्धि सुविधा | 3,631 | 3,879 | 5,423 |
| 20107 | भत्ता तथा सुविधा | 704 | 794 | 1,148 |
| 20108 | लुगा भत्ता | 280 | 330 | 460 |
| 20109 | चाडपर्व खर्च | 2,392 | 2,404 | 2,985 |
| 20110 | औषधि, उपचार खर्च | | | |
| - | यूटिलिटी/उपयोगिता खर्च | 35 | 39 | - |
| 20111 | जीवन बीमा खर्च | 237 | 215 | 248 |
| 20112 | विदा वापत रकम | 2,054 | 2,222 | 2,805 |
| 20113 | पत्रपत्रिका तथा टेलिफोन सुविधा खर्च | 12 | - | |
| | जम्मा | 53,582 | 52,572 | 66,295 |
| 20201 | परीक्षा संचालन खर्च | 2,678 | 1,993 | 2,889 |
| 20202 | परीक्षा पारिश्रमिक खर्च | | | |
| 20203 | परीक्षा केन्द्र संचालन खर्च | | | |
| 20204 | घर भाडा | | | |
| 20205 | विद्युत तथा पानी | 34 | 46 | 180 |

| | | | | |
|-------|---|---------------|---------------|---------------|
| 20206 | सेवा शुल्क खर्च | 239 | 365 | 800 |
| 20207 | विज्ञापन तथा प्रचार | 44 | 20 | 248 |
| 20208 | अतिथी सत्कार | 2 | 4 | 30 |
| 20209 | छपाई तथा मसलन्द | 244 | 369 | 430 |
| 20210 | संचार तथा हुलाक महशुल | 23 | 15 | 94 |
| 20211 | कानुनी तथा ब्यबसायिक परामर्श खर्च | | | |
| 20212 | सवारी साधन ईन्धन खर्च | 553 | 692 | 1,016 |
| 20213 | सवारी साधन मर्मत खर्च | 915 | 159 | 550 |
| 20214 | मर्मत तथा सम्भार | 170 | 207 | 831 |
| 20215 | पत्र पत्रिका खर्च | 5 | | 15 |
| 20216 | विमा तथा नविकरण खर्च | 64 | 67 | 180 |
| 20217 | भ्रमण खर्च | 294 | 106 | 600 |
| 20218 | लेखा परिक्षण शुल्क तथा खर्च | 33 | 15 | 30 |
| 20219 | बैठक तथा भत्ता खर्च | 232 | 269 | 600 |
| 20220 | संस्थागत शुल्क | | | |
| - | बैंक चार्ज | 2 | 3 | - |
| 20221 | इनाम तथा पुरस्कार | | | 10 |
| 20222 | दीक्षान्त, उत्सव तथा समारोह खर्च | 31 | - | 30 |
| 20223 | कार्यालय खर्च | 150 | 173 | 489 |
| 20224 | प्रकाशन खर्च | 145 | 190 | 320 |
| 20225 | विद्यार्थी कल्याण | 1273 | 2,031 | 3,210 |
| 20226 | अनुसन्धान खर्च | 640 | 582 | 1,500 |
| 20227 | छात्रवृत्ति खर्च | 932 | 961 | 1,375 |
| 20228 | शैक्षिक सामग्री | 118 | 62 | 232 |
| 20229 | मानव संसाधन विकास | 321 | 479 | 1,650 |
| 20230 | गोष्ठी तथा सम्मेलन | 562 | 114 | 1,100 |
| 20231 | पट्टक्रम निर्माण र परिमार्जन | | | |
| 20232 | विविध खर्च | - | 373 | 680 |
| 20233 | प्रयोगशाला सम्बन्धी खर्च | | | |
| 20234 | मूल्याङ्कन तथा निरिक्षण खर्च | | | |
| 20235 | नयाँ आंगिक कार्यक्रम तथा संवन्धन बिस्तार खर्च | | | |
| 20236 | औषधीजन्य खरिद | | | |
| 20237 | अस्पताल क्लिनिकल खर्च | | | |
| 20238 | अस्पताल प्रयोगशाला सम्बन्धि खर्च | | | |
| | संचालन खर्चको जम्मा | 9,704 | 9,295 | 19,089 |
| | शिक्षक कर्मचारी खर्च जम्मा | 53,582 | 52,572 | 66,295 |
| | पूँजीगत खर्च | 535 | 1,669 | 3,828 |
| | कुल व्यय जम्मा | 63,821 | 63,536 | 89,212 |

| पोखरा विश्वविद्यालय | | | | |
|--|--------------------------|--------------------------------|--------------------------------|------------------------------|
| स्कूल अफ बिजनेस, व्यवस्थापन अध्ययन संकाय | | | | |
| आ. ब. 2081/082 को स्वीकृत आय रु हजारमा | | | | |
| बजेट कोड नं. | बजेट शिर्षक | आ.व. 2079 र 080 को वास्तविक आय | आ.व. 2080 र 081 को वास्तविक आय | आ.व. 2081 र 82 को स्वीकृत आय |
| 10100 | आंगिक कार्यक्रमबाट आय | 60,194 | 58,869 | 60,426 |
| 10200 | सम्बन्धन कार्यक्रमबाट आय | | | |
| 10300 | अनुदान तथा सहयोग | 5,474 | 1,320 | 5,000 |
| 10400 | ब्याज आय | 2,446 | 2,074 | 1,000 |
| 10600 | बिबिध आम्दानी | 686 | 512 | 561 |
| | आय जम्मा | 68,800 | 62,775 | 66,987 |

ANNEX 2

LIST OF THE FACULTY MEMBERS

| S.N. | Name | Academic Degree | Subject | Designation |
|-------------|-------------------------------|------------------------|---------------------------------|---------------------|
| 1 | Prof. Hari Bahadur Khadka | PhD Ongoing | Finance | Professor |
| 2 | Prof. Gyaneshwor Sharma | PhD | Accountancy | Professor |
| 3. | Prof. Deepak Bahadur Bhandari | PhD | Finance | Professor |
| 4. | Prof. Deepak Raj Paudel | PhD | Statistics | Professor |
| 5. | Bal Ram Bhattarai | PhD | Marketing, Sociology | Associate Professor |
| 6. | Daya Raj Dhakal | PhD | Management | Associate Professor |
| 7. | Umesh Singh Yadav | PhD | Marketing | Associate Professor |
| 8. | Surya Bahadur G.C | PhD | Finance | Associate Professor |
| 9. | Rabindra Ghimire | PhD | Finance | Associate Professor |
| 10. | Bharat Ram Dhungana | PhD | Finance/ Economics | Associate Professor |
| 11 | Bishwo Nath Lamichhane | PhD Ongoing | M.Phil English | Associate Proessor |
| 12 | Purna Bahadur Khand | PhD | Economics | Associate Professor |
| 13. | Shrijan Gyanwali | PhD | Marketing/ Entrepreneurship | Associate Professor |
| 14. | Deepanjal Shrestha | PhD | Computer Science and Technology | Associate Professor |
| 15. | Deepmala Shrestha | PhD | General Management | Lecturer |
| 16. | Nirajan Bam | PhD | Statistics | Lecturer |
| 17. | Bishwo Raj Parajuli | PhD Ongoing | English | Lecturer |
| 18. | Santosh Kumar Gurung | PhD Ongoing | Sociology | Lecturer |
| 19. | Yog Raj Lamichhane | PhD Ongoing | English | Lecturer |
| 20. | Bibek Karmacharya | PhD Ongoing | Finance | Lecturer |
| 21. | Deepak Neupane | PhD Ongoing | M.A Economics | Lecturer |
| 22. | Durga Prasad Chapagai | PhD Ongoing | General Management | Lecturer |
| 23. | Ram Krishna Chapagain | PhD Ongoing | Finance | Lecturer |
| 24. | Kripa Kunwar | PhD Ongoing | Finance | Lecturer |
| 25. | Pradeep Sapkota | PhD | MBA, Marketing | Lecturer |
| 26. | Deepesh Ranabhat | PhD | Finance / Economics | Lecturer |

| | | | | |
|-----|-------------------------------|-------------|-----------------------------|----------|
| 27. | Shanti Devi Chhetri | PhD Ongoing | Management | Lecturer |
| 28. | Subarna Bir Jung bahadur Rana | PhD Ongoing | Marketing | Lecturer |
| 29. | Hem Kanta Poudel | PhD Ongoing | Accountancy | Lecturer |
| 30. | Deepak Ojha | PhD Ongoing | Accountancy | Lecturer |
| 31. | Aashish Thapa | PhD | General Management | Lecturer |
| 32. | Rabindra Prasad Baral | PhD Ongoing | Accountancy | Lecturer |
| 33. | Bal Chandra Poudel | MM | General Management | Lecturer |
| 34. | Sujita Adhikari | PhD Ongoing | Marketing | Lecturer |
| 35. | Ghanashyam Tiwari | PhD Ongoing | Accountancy | Lecturer |
| 36. | Bharat Raj Wagle | PhD Ongoing | Mathematics | Lecturer |
| 37. | Ram Prasad Timilsina | PhD Ongoing | Management | Lecturer |
| 38. | Ujjwal Adhikari | PhD Ongoing | Management | Lecturer |
| 39. | Subash Malla | PhD Ongoing | Management | Lecturer |
| 40. | Keshav Lamichhane | M.Sc. | Statistics | Lecturer |
| 41. | Hom Bahadur Chhetri | MPhil | Economics | Lecturer |
| 42. | Sujana Acharya | MBA | Management | Lecturer |
| 43. | Pushpa Raj Koirala | MA | Psychology | Lecturer |
| 44. | Yuba Raj Subedi | MA/MBA | English and HRM | Lecturer |
| 45. | Jeevan Lamichhane | MA | English | Lecturer |
| 46. | Neesha Rajkarnikar | PhD Ongoing | Computer & IT, E-Governance | Lecturer |
| 47. | Krishna Raj Bhurtel | MBA | Accountancy | Lecturer |
| 48. | Ashish Bhujel | M.Sc. | Statistics | Lecture |

ANNEX 3

LIST OF THE ADMINISTRATIVE STAFF

| S.N. | Name | Designation | Academic Degree |
|----------------------|-----------------------|------------------------------------|--|
| 1 | Pramesh Paudel | Deputy Administrator (Account) | MBA |
| 2 | Pramod Giri | Deputy Administrator (Admin) | MA Economics, MA Political Science and MPA TU |
| 3 | Debaki Dahal | Assistant Administrator (Admin) | MA Political Science |
| 4 | Bandana Godar Thapa | Assistant Administrator (Admin) | MA Economics |
| 5 | Laxman Bastola | Head Assistant (Admin) | B.Ed. |
| 6 | Toran Bahadur B.K. | Head Assistant (Admin) | BBS |
| 7 | Pankaj Kumar Yadav | Head Assistant (Finance) | MBA |
| 8 | Suresh Bastola | Head Assistant (IT) | BCA |
| 9 | Shobha Acharya Pandit | Assistant | M.Ed |
| 10 | Sushma Paudel | Assistant | BBS |
| Support staff | | | |
| 1 | Ananda Paudel | Office Helper | |
| 2 | Jogiram Sarki | Office Helper | |
| 3 | Tara Gurung | Office Helper | |
| 4 | Shiva Bahadur Nepali | Driver | |
| 5 | Chandra Kanta Paudel | Helper | |
| 6 | Kalpana K.C. Godar | Office Helper | |

ANNEX 4
GRADUATE LIST 2023

Graduate List MBA

| S. No. | Registration No. | Name of the Students | Gender | CGPA | Completion Year |
|--------|------------------|------------------------|--------|------|-----------------|
| 1 | 2019-2-22-0283 | Aashish Gurung | M | 3.86 | 2023 |
| 2 | 2020-2-22-0228 | Aashish Shrestha | M | 3.61 | 2023 |
| 3 | 2019-2-22-0205 | Aayushma Timilsina | F | 3.51 | 2023 |
| 4 | 2019-2-22-0489 | Abinash B.K. | M | 3.54 | 2023 |
| 5 | 2021-2-22-0144 | Alisha Gurung | F | 3.69 | 2024 |
| 6 | 2019-2-22-0284 | Alisha Shrestha | F | 3.85 | 2023 |
| 7 | 2018-2-22-0563 | Amman Dhewajoo | M | 3.41 | 2023 |
| 8 | 2020-2-22-0230 | Amrit Adhikari | M | 3.86 | 2023 |
| 9 | 2021-2-22-0145 | Anamika Koirala | F | 3.70 | 2024 |
| 10 | 2020-2-22-0406 | Angana Subedi | F | 3.52 | 2024 |
| 11 | 2018-2-22-0565 | Anil Jamarkattel | M | 3.49 | 2023 |
| 12 | 2015-2-03-1716 | Anil Sapkota | M | 3.97 | 2023 |
| 13 | 2020-2-22-0231 | Anish Adhikari | M | 3.83 | 2023 |
| 14 | 2019-2-22-0490 | Anish Poudel | M | 3.56 | 2023 |
| 15 | 2020-2-22-0232 | Anjali Poudel | F | 3.87 | 2023 |
| 16 | 2021-2-22-0147 | Anjeela Bhandari | F | 3.64 | 2024 |
| 17 | 2019-2-22-0208 | Ankit Chhetri | M | 3.94 | 2023 |
| 18 | 2013-2-03-2065 | Anupama Bagale | F | 3.78 | 2023 |
| 19 | 2021-2-22-0148 | Arjun Baniya | M | 3.88 | 2024 |
| 20 | 2020-2-22-0235 | Aruna Ale | F | 3.62 | 2023 |
| 21 | 2018-2-22-0593 | Ashish Bhurtel | M | 3.71 | 2023 |
| 22 | 2020-2-22-0237 | Ashmita Sigdel | F | 3.65 | 2023 |
| 23 | 2018-2-22-0258 | Ashok Regmi | M | 3.80 | 2023 |
| 24 | 2020-2-22-0412 | Asmita Paudel | F | 3.85 | 2023 |
| 25 | 2019-2-22-0214 | Avilasha Khand Thakuri | F | 3.49 | 2022 |
| 26 | 2020-2-22-0414 | Babit Rana Magar | M | 3.62 | 2023 |
| 27 | 2020-2-57-0148 | Barsha G.C. | F | 3.61 | 2024 |
| 28 | 2018-2-22-0566 | Basana Khanal | F | 3.40 | 2023 |
| 29 | 2019-2-22-0218 | Binju Kumari Gurung | F | 3.41 | 2024 |
| 30 | 2019-2-22-0496 | Birajan Adhikari | M | 3.65 | 2023 |
| 31 | 2020-2-22-0241 | Bishal Kumar Gupta | M | 3.68 | 2023 |
| 32 | 2019-2-22-0288 | Deepak Raj Joshi | M | 3.41 | 2023 |
| 33 | 2021-2-22-0157 | Dhiraj Sai | M | 3.78 | 2024 |
| 34 | 2018-2-22-0568 | Dinesh Subedi | M | 3.39 | 2023 |
| 35 | 2019-2-22-0222 | Dipesh Baral | M | 3.25 | 2023 |

| | | | | | |
|----|----------------|----------------------|---|------|------|
| 36 | 2019-2-22-0223 | Dipesh Sapkota | M | 3.33 | 2023 |
| 37 | 2018-2-22-0569 | Gir Kumari Gurung | F | 3.34 | 2023 |
| 38 | 2020-2-22-0243 | Guru Prasad Poudel | M | 3.64 | 2023 |
| 39 | 2019-2-22-0498 | Hari Bahadur Karki | M | 3.20 | 2024 |
| 40 | 2019-2-22-0225 | Ishwor Mani Bhandari | M | 3.80 | 2024 |
| 41 | 2018-2-22-0570 | Janaki Malla | F | 3.40 | 2023 |
| 42 | 2020-2-22-0415 | Jaya Parajuli | F | 3.66 | 2023 |
| 43 | 2020-2-22-0244 | Jyoti Kadel | F | 3.72 | 2023 |
| 44 | 2019-2-22-0226 | Kabita Gurung | F | 3.59 | 2023 |
| 45 | 2015-2-03-1741 | Kabita Poudel | F | 3.89 | 2023 |
| 46 | 2020-2-22-0416 | Kapil Devkota | M | 3.70 | 2024 |
| 47 | 2018-2-22-0572 | Kripa Rana | F | 3.72 | 2023 |
| 48 | 2020-2-57-0158 | Kriti G.C. | F | 3.56 | 2024 |
| 49 | 2019-2-22-0291 | Kumudinee K.C. | F | 3.63 | 2023 |
| 50 | 2021-2-22-0166 | Kusum Chapagain | F | 3.66 | 2024 |
| 51 | 2020-2-22-0246 | Kusum Parajuli | F | 3.77 | 2023 |
| 52 | 2020-2-22-0248 | Laxmi Baral | F | 3.60 | 2023 |
| 53 | 2020-2-22-0417 | Madan Kumar shrestha | M | 3.61 | 2023 |
| 54 | 2018-2-22-0273 | Mahendra Acharya | M | 3.39 | 2022 |
| 55 | 2021-2-22-0168 | Mahesh Raj Devkota | M | 3.77 | 2024 |
| 56 | 2019-2-22-0229 | Mamata Bhandari | F | 3.72 | 2023 |
| 57 | 2018-2-22-0573 | Mandip Puri | M | 3.44 | 2023 |
| 58 | 2020-2-22-0418 | Manisha Baral | F | 3.77 | 2023 |
| 59 | 2020-2-22-0249 | Manisha Maraseni | F | 3.82 | 2023 |
| 60 | 2019-2-22-0231 | Manisha Shrestha | F | 3.80 | 2023 |
| 61 | 2019-2-22-0292 | Manita Gurung | F | 3.53 | 2023 |
| 62 | 2020-2-22-0419 | Manju Chhantyal | F | 3.48 | 2023 |
| 63 | 2020-2-22-0420 | Mohan Chandra Baral | M | 3.84 | 2023 |
| 64 | 2021-2-22-0169 | Naveena Gurung | F | 3.64 | 2024 |
| 65 | 2018-2-22-0601 | Neha Bijukchhe | F | 3.47 | 2023 |
| 66 | 2020-2-22-0422 | Nilam Biswakarma | F | 3.76 | 2023 |
| 67 | 2019-2-22-0294 | Niru Dhakal | F | 3.50 | 2023 |
| 68 | 2018-2-22-0616 | Nisha Gauchan | F | 3.25 | 2023 |
| 69 | 2020-2-22-0255 | Nitiz Lamichhane | M | 3.86 | 2023 |
| 70 | 2020-2-22-0423 | Prakash Bohara | M | 3.60 | 2023 |
| 71 | 2021-2-22-0175 | Prakriti Chhetri | F | 3.74 | 2024 |
| 72 | 2021-2-22-0176 | Praticha Gurung | F | 3.64 | 2024 |
| 73 | 2018-2-22-0575 | Pratiksha Bastola | F | 3.43 | 2023 |
| 74 | 2020-2-22-0425 | Pratikshya Chhetri | F | 3.85 | 2023 |
| 75 | 2018-2-22-0282 | Priya Ghale | F | 3.81 | 2023 |

| | | | | | |
|-----|----------------|-------------------------|---|------|------|
| 76 | 2018-2-22-0577 | Priya Joshi | F | 3.74 | 2023 |
| 77 | 2019-2-22-0295 | Priya Shakya | F | 3.78 | 2023 |
| 78 | 2012-2-45-0450 | Rajan Wagle | M | 3.43 | 2023 |
| 79 | 2020-2-22-0258 | Rajeeb Bhattarai | M | 3.70 | 2023 |
| 80 | 2019-2-22-0239 | Rajesh Acharya | M | 3.62 | 2023 |
| 81 | 2019-2-22-0299 | Rakshya Parajuli | F | 3.34 | 2023 |
| 82 | 2020-2-22-0259 | Ram Thapa | M | 3.80 | 2023 |
| 83 | 2021-2-22-0178 | Ranjana Kumari Thagunna | F | 3.95 | 2024 |
| 84 | 2010-2-03-1598 | Rita Poudel | F | 3.24 | 2023 |
| 85 | 2019-2-22-0242 | Ritesh Thapa | M | 3.76 | 2023 |
| 86 | 2020-2-22-0426 | Roshani Bastola | F | 3.93 | 2023 |
| 87 | 2018-2-22-0579 | Ruksana Malla | F | 3.55 | 2023 |
| 88 | 2020-2-22-0261 | Sabita Pahari | F | 3.77 | 2023 |
| 89 | 2020-2-22-0262 | Sachin Poudel | M | 3.53 | 2023 |
| 90 | 2020-2-22-0427 | Sadiksha Subedi | F | 3.79 | 2023 |
| 91 | 2020-2-22-0263 | Sagar Gurung | M | 3.53 | 2023 |
| 92 | 2018-2-22-0581 | Sagar Nepali | M | 3.43 | 2023 |
| 93 | 2018-2-22-0289 | Salima Gurung | F | 3.68 | 2023 |
| 94 | 2019-2-22-0302 | Sambat Bikram Mahat | M | 3.42 | 2024 |
| 95 | 2018-2-22-0582 | Samikshya Baral | F | 3.54 | 2023 |
| 96 | 2021-2-22-0185 | Samita Neupane | F | 3.51 | 2024 |
| 97 | 2018-2-22-0611 | Samjhana Baral | F | 3.65 | 2023 |
| 98 | 2020-2-22-0430 | Samjhana Bhujel | F | 3.63 | 2024 |
| 99 | 2020-2-22-0429 | Samjhana Koirala | F | 3.80 | 2023 |
| 100 | 2020-2-22-0431 | Sanam Gurung | M | 3.87 | 2023 |
| 101 | 2018-2-22-0583 | Sanam Sunar | M | 3.47 | 2023 |
| 102 | 2021-2-22-0187 | Sandesh Baral | M | 3.60 | 2024 |
| 103 | 2021-2-22-0188 | Sandesh Timilsena | M | 3.72 | 2024 |
| 104 | 2019-2-22-0246 | Sandip Bhujel | M | 3.51 | 2023 |
| 105 | 2021-2-22-0190 | Sanjok Raj Adhikari | M | 3.81 | 2024 |
| 106 | 2019-2-22-0509 | Santosh Acharya | M | 3.61 | 2023 |
| 107 | 2019-2-22-0307 | Savitra Karki | F | 3.27 | 2024 |
| 108 | 2020-2-22-0432 | Shila Bhattarai | F | 3.94 | 2023 |
| 109 | 2019-2-22-0252 | Shila Karki | F | 3.87 | 2023 |
| 110 | 2019-2-22-0308 | Shilpi Shrestha | F | 3.54 | 2023 |
| 111 | 2020-2-22-0271 | Shweta Poudel | F | 3.81 | 2023 |
| 112 | 2020-2-57-0168 | Sonika Bhari | F | 3.66 | 2024 |
| 113 | 2019-2-22-0310 | Srijan Ranjit | M | 3.54 | 2023 |
| 114 | 2021-2-22-0195 | Sristi Bhurtel | F | 4.00 | 2024 |

| | | | | | |
|-----|----------------|------------------------|---|------|------|
| 115 | 2013-2-03-2097 | Subas Raj Koirala | M | 3.38 | 2023 |
| 116 | 2019-2-57-0116 | Subash Kunwar | M | 3.57 | 2023 |
| 117 | 2020-2-22-0433 | Sudan Thapa | M | 3.80 | 2023 |
| 118 | 2020-2-22-0274 | Sujan Subedi | M | 3.47 | 2023 |
| 119 | 2018-2-22-0299 | Suman Subedi | M | 3.45 | 2023 |
| 120 | 2018-2-22-0584 | Suman Subedi | M | 3.44 | 2023 |
| 121 | 2018-2-22-0585 | Sumit Kumar Kashyap | M | 3.30 | 2023 |
| 122 | 2021-2-22-0196 | Sunil Dhakal | M | 3.84 | 2024 |
| 123 | 2020-2-57-0173 | Supriya Gurung | F | 3.68 | 2024 |
| 124 | 2021-2-22-0198 | Suraj Bahadur Chhetri | M | 3.47 | 2024 |
| 125 | 2018-2-22-0615 | Suraj Basnet | M | 3.42 | 2023 |
| 126 | 2018-2-22-0586 | Susan Poudel | M | 3.67 | 2023 |
| 127 | 2018-2-22-0587 | Susanjit Bijay Koirala | M | 3.30 | 2024 |
| 128 | 2019-2-22-0513 | Sushil G.C. | M | 3.36 | 2023 |
| 129 | 2020-2-22-0277 | Sushmita Gurung | F | 3.89 | 2023 |
| 130 | 2020-2-22-0278 | Sushmita Sharma | F | 3.91 | 2023 |
| 131 | 2020-2-22-0279 | Ujjawal Nurshing K.C. | M | 3.51 | 2023 |
| 132 | 2021-2-22-0200 | Usha Adhikari | F | 3.75 | 2024 |
| 133 | 2020-2-22-0280 | Usha Neupane | F | 3.68 | 2023 |
| 134 | 2019-2-22-0311 | Vijay Sharma | M | 3.88 | 2023 |
| 135 | 2021-2-22-0201 | Yuwaraj Paudel | M | 3.56 | 2024 |

Graduate List BBA

| S. No. | Registration No. | Name of the Students | Gender | CGPA | Completion Year |
|--------|------------------|----------------------------|--------|------|-----------------|
| 1 | 2018-2-03-0195 | Aakash Thapa | M | 3.12 | 2023 |
| 2 | 2018-2-03-0197 | Akriti Ghimire | F | 2.84 | 2023 |
| 3 | 2018-2-03-0198 | Anamika Rana Bhat | F | 3.41 | 2023 |
| 4 | 2017-2-03-1609 | Anil Basaula | M | 2.39 | 2023 |
| 5 | 2018-2-03-0199 | Anish Regmi | M | 3.23 | 2023 |
| 6 | 2018-2-03-0200 | Anju Roka | F | 3.19 | 2023 |
| 7 | 2018-2-03-0201 | Anu Gurung | F | 2.83 | 2023 |
| 8 | 2018-2-03-0203 | Arati Adhikari | F | 3.24 | 2023 |
| 9 | 2018-2-03-0205 | Ashmita Adhikari | F | 2.96 | 2023 |
| 10 | 2018-2-03-0206 | Ashmita Dhakal | F | 2.69 | 2023 |
| 11 | 2018-2-03-0207 | Ashmita Tiwari | F | 3.35 | 2023 |
| 12 | 2018-2-03-0208 | Asmita Poudel | F | 2.92 | 2023 |
| 13 | 2018-2-03-0209 | Ayusha Rana | F | 3.61 | 2023 |
| 14 | 2018-2-03-0210 | Barsha Ranabhat | F | 3.05 | 2023 |
| 15 | 2018-2-03-0211 | Bhabisha Tilija Pun | F | 3.12 | 2023 |
| 16 | 2018-2-03-0212 | Bibek Gautam | M | 3.60 | 2023 |
| 17 | 2018-2-03-0213 | Bibek Tiwari | M | 3.64 | 2023 |
| 18 | 2018-2-03-0214 | Binita Gurung | F | 2.46 | 2023 |
| 19 | 2018-2-03-0215 | Binita Lamichhane | F | 2.97 | 2023 |
| 20 | 2018-2-03-0216 | Binita Timilsina | F | 3.33 | 2023 |
| 21 | 2018-2-03-0217 | Bipana Ghimire | F | 3.16 | 2023 |
| 22 | 2018-2-03-0218 | Bipana Poudel | F | 2.86 | 2023 |
| 23 | 2018-2-03-0219 | Dakshina Khatri | F | 3.31 | 2023 |
| 24 | 2017-2-03-1631 | Dipendra Gautam | M | 2.33 | 2023 |
| 25 | 2018-2-03-0220 | Elina Khadka | F | 3.17 | 2023 |
| 26 | 2018-2-03-0221 | Eliza Gurung | F | 2.81 | 2023 |
| 27 | 2018-2-03-0222 | Ganesh Paudel | M | 2.46 | 2023 |
| 28 | 2018-2-03-0223 | Gaurav Gautam | M | 2.65 | 2023 |
| 29 | 2018-2-03-0224 | Gayatri Kumari Sen Thakuri | F | 2.78 | 2023 |
| 30 | 2018-2-03-0225 | Govinda Poudel | M | 2.86 | 2023 |
| 31 | 2018-2-03-0226 | Guman Singh Gurung | M | 2.78 | 2023 |
| 32 | 2018-2-03-0227 | Jayanti Subedi | F | 3.42 | 2023 |
| 33 | 2018-2-03-0229 | Kanchan Gurung | F | 2.95 | 2023 |
| 34 | 2016-2-03-2506 | Kareena Wagle | F | 2.46 | 2023 |
| 35 | 2015-2-03-0203 | Krishna Bhandari | M | 2.46 | 2021 |
| 36 | 2018-2-03-0230 | Kul Binder Rana | M | 3.28 | 2023 |
| 37 | 2018-2-03-0231 | Kushal Paudel | M | 2.81 | 2023 |
| 38 | 2018-2-03-0232 | Laxmi Baniya | F | 3.09 | 2023 |

| | | | | | |
|----|----------------|---------------------------|---|------|------|
| 39 | 2018-2-03-0233 | Lila Singh Khadka | F | 3.47 | 2023 |
| 40 | 2017-2-03-1640 | Manisha Sen | F | 2.69 | 2023 |
| 41 | 2018-2-03-0234 | Mukunda Mani Bhandari | M | 2.76 | 2023 |
| 42 | 2018-2-03-0235 | Namrata Adhikari | F | 3.50 | 2023 |
| 43 | 2018-2-03-0236 | Niharika Thakurathi | F | 3.22 | 2023 |
| 44 | 2018-2-03-0237 | Nikita Acharya | F | 3.68 | 2023 |
| 45 | 2018-2-03-0238 | Nita Chhantyal | F | 2.66 | 2023 |
| 46 | 2018-2-03-0240 | Pooja Shah | F | 3.00 | 2023 |
| 47 | 2018-2-03-0241 | Prabesh Malla | M | 2.75 | 2023 |
| 48 | 2018-2-03-0244 | Pradip Thapa Bhujel | M | 3.73 | 2023 |
| 49 | 2018-2-03-0245 | Prakash Parajuli | M | 2.72 | 2023 |
| 50 | 2018-2-03-0246 | Pramish Shrestha | M | 2.82 | 2023 |
| 51 | 2018-2-03-0247 | Prashant Tripathi | M | 2.89 | 2023 |
| 52 | 2018-2-03-0248 | Pratima Bhusal | F | 3.51 | 2023 |
| 53 | 2018-2-03-0249 | Pratima Subedi | F | 3.00 | 2023 |
| 54 | 2017-2-03-1654 | Prativa Baral | F | 2.50 | 2023 |
| 55 | 2018-2-03-0250 | Priya Khawas | F | 3.34 | 2023 |
| 56 | 2018-2-03-0251 | Puja Gurung | F | 3.82 | 2023 |
| 57 | 2018-2-03-0252 | Purnima Tiwari | F | 3.17 | 2023 |
| 58 | 2018-2-03-0253 | Purushotam Pokhrel | M | 3.16 | 2023 |
| 59 | 2018-2-03-0254 | Rajan Bhandari | M | 2.76 | 2023 |
| 60 | 2018-2-03-0255 | Rajani Adhikari | F | 2.73 | 2023 |
| 61 | 2018-2-03-0256 | Rajib Bhandari | M | 3.10 | 2023 |
| 62 | 2018-2-03-0257 | Ram Prasad Sapkota | M | 3.71 | 2023 |
| 63 | 2018-2-03-0258 | Rashmi Sigdel | F | 3.63 | 2023 |
| 64 | 2017-2-03-1657 | Rashu Neupane | F | 2.77 | 2023 |
| 65 | 2018-2-03-0440 | Reetu Gurung | F | 2.65 | 2023 |
| 66 | 2018-2-03-0259 | Rojina Gurung | F | 3.00 | 2023 |
| 67 | 2018-2-03-0260 | Roshani Shrestha | F | 2.83 | 2023 |
| 68 | 2018-2-03-0261 | Roshani Thapa | F | 3.02 | 2023 |
| 69 | 2018-2-03-0262 | Roshni Lamgade | F | 3.01 | 2023 |
| 70 | 2018-2-03-0263 | Rupa Gurung | F | 3.10 | 2023 |
| 71 | 2017-2-03-1662 | Sabina Ghimire | F | 2.56 | 2023 |
| 72 | 2018-2-03-0264 | Sagar Poudel | M | 3.30 | 2023 |
| 73 | 2018-2-03-0265 | Sagar Rimal | M | 3.54 | 2023 |
| 74 | 2018-2-03-0266 | Sagun Paudel | F | 3.04 | 2023 |
| 75 | 2018-2-03-0267 | Samiksha Adhikari Chhetri | F | 3.35 | 2023 |
| 76 | 2018-2-03-0839 | Samikshya Sapkota | F | 3.72 | 2023 |
| 77 | 2018-2-03-0268 | Sandesh Khatiwada | M | 3.14 | 2023 |
| 78 | 2018-2-03-0269 | Sandesh Khatri | M | 2.69 | 2024 |

| | | | | | |
|----|----------------|-------------------------|---|------|------|
| 79 | 2018-2-03-0271 | sandesh Wagle | M | 3.06 | 2023 |
| 80 | 2018-2-03-0272 | Sandhya Neupane | F | 3.29 | 2023 |
| 81 | 2018-2-03-0273 | Sanjeev Adhikari | M | 2.67 | 2023 |
| 82 | 2011-2-03-1945 | Sanjita Sharma | F | 2.01 | 2023 |
| 83 | 2018-2-03-0274 | Sapna Gurung | F | 3.29 | 2023 |
| 84 | 2018-2-03-0275 | Saugat Adhikari kshetri | M | 3.53 | 2023 |
| 85 | 2018-2-03-0276 | Saugat Pageni | M | 3.15 | 2023 |
| 86 | 2018-2-03-0278 | Shusan Ranabhat | M | 3.29 | 2023 |
| 87 | 2018-2-03-0281 | Subash Pageni | M | 3.46 | 2023 |
| 88 | 2018-2-03-0282 | Sun Devi Gurung | F | 2.74 | 2023 |
| 89 | 2018-2-03-0283 | Suraj Thapa | M | 2.75 | 2023 |
| 90 | 2018-2-03-0284 | Swagat Khatiwada | M | 3.45 | 2023 |
| 91 | 2017-2-03-1694 | Unique Lamsal | M | 2.45 | 2023 |
| 92 | 2018-2-03-0285 | Usha Adhikari | F | 3.28 | 2023 |

Graduate List BBA-BI

| S. No. | Registration No. | Name of the Students | Gender | CGPA | Completion Year |
|--------|------------------|----------------------|--------|------|-----------------|
| 1 | 2017-2-45-0288 | Abhishek Poudel | M | 2.38 | 2023 |
| 2 | 2016-2-45-0523 | Abiral Bhandari | M | 2.25 | 2023 |
| 3 | 2018-2-45-0004 | Amar Bahadur Mahat | M | 3.17 | 2023 |
| 4 | 2016-2-45-0528 | Anup Adhikari | M | 2.21 | 2023 |
| 5 | 2018-2-45-0006 | Anusha Gyawali | F | 3.50 | 2023 |
| 6 | 2018-2-45-0009 | Bimal K.C. | M | 2.52 | 2023 |
| 7 | 2018-2-45-0011 | Binita Subedi | F | 3.31 | 2023 |
| 8 | 2018-2-45-0014 | Chhali Maya Gurung | F | 3.40 | 2023 |
| 9 | 2018-2-45-0015 | Dipesh Bhujel | M | 3.33 | 2023 |
| 10 | 2018-2-45-0016 | Dipika Subedi | F | 3.15 | 2023 |
| 11 | 2014-2-45-0613 | Jayanti Bhattarai | F | 2.13 | 2023 |
| 12 | 2018-2-45-0018 | Kabita Nagarkoti | F | 2.72 | 2023 |
| 13 | 2018-2-45-0019 | Khumananda Khanal | M | 3.26 | 2023 |
| 14 | 2018-2-45-0020 | Manisha Kaucha | F | 3.69 | 2023 |
| 15 | 2018-2-45-0021 | Mita Dhakal | F | 2.74 | 2023 |
| 16 | 2018-2-45-0022 | Muna Thapa | F | 2.33 | 2023 |
| 17 | 2018-2-45-0023 | Nah Kumari Ale | F | 2.77 | 2023 |
| 18 | 2018-2-45-0024 | Namit Bastola | M | 2.51 | 2023 |
| 19 | 2018-2-45-0025 | Niruta K.C. | F | 3.14 | 2023 |
| 20 | 2018-2-45-0026 | Priyanka Bastola | F | 2.81 | 2023 |
| 21 | 2018-2-45-0028 | Roshani Ale | F | 2.94 | 2023 |
| 22 | 2018-2-45-0029 | Rubi Paudel | F | 3.05 | 2023 |
| 23 | 2018-2-45-0030 | Sandhya Chhetri | F | 2.46 | 2023 |
| 24 | 2018-2-45-0033 | Sarita Chhetri | F | 2.63 | 2023 |
| 25 | 2018-2-45-0036 | Sheetal K C | F | 2.41 | 2023 |
| 26 | 2018-2-45-0039 | Sumitra Tiwari | F | 2.30 | 2023 |
| 27 | 2018-2-45-0040 | Suraj Dhamala | M | 2.81 | 2023 |
| 28 | 2018-2-45-0041 | Sushil Gautam | M | 3.49 | 2023 |
| 29 | 2018-2-45-0042 | Sushmita Gurung | F | 2.94 | 2023 |
| 30 | 2018-2-45-0043 | Susmita Dhakal | F | 3.60 | 2023 |
| 31 | 2018-2-45-0044 | Suvekshya Timilsina | F | 3.17 | 2023 |
| 32 | 2018-2-45-0045 | Yamuna Thapa | F | 3.24 | 2023 |